

GCS

Communication Gateway for Domino

Communication Gateway for Domino is one of GlobalComServer's e-mail environments

By implementing the GlobalComServer fax and/or SMS service into your e-mail system, you can improve information exchange not only within your business, but also with outside partners.

fax server 32
GLOBALCOMSERVER

SMS server 32
GLOBALCOMSERVER

You'll have all the advantages of e-mail for your faxes and SMS messages. Just look at what you can do

- ▶ Send a fax or SMS message the same way you send e-mail
- ▶ Store your public and private directories (mail database)
- ▶ Fax Domain created on Lotus Notes
- ▶ Process transmissions and receptions automatically
- ▶ Take advantage of Least Cost Routing (messages sent at the least cost) through the Internet, Intranet, Extranet, etc.
- ▶ Attach documents in their original format (Office, SmartSuite, HTML, Adobe, PCL5E, Postscript and over 200 others)
- ▶ Choose your own cover page and sending times
- ▶ Your transmission and reception records are available automatically in your e-mail system
- ▶ Remote management module
- ▶ Routing of incoming faxes by DID, line, OCR, etc.

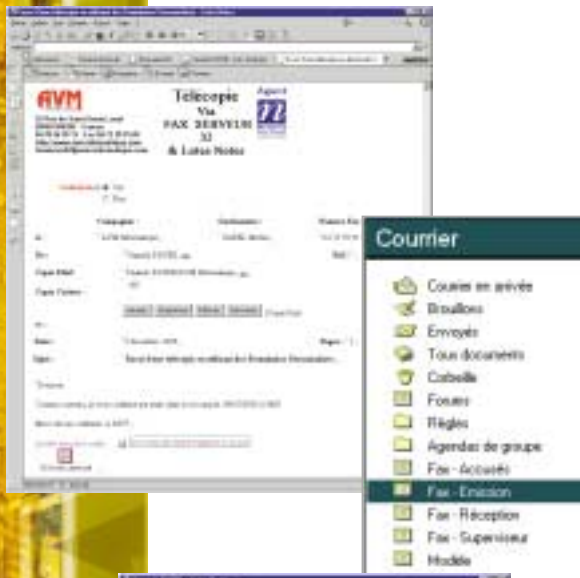
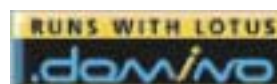
No software installation needed on the client computer

Administration in Domino

- ▶ GCS Domino Admin gère vos profils utilisateurs, vos tables de routage, vos pages de garde ... etc. Grâce à son intégration dans les bases Notes GCS Domino Admin vous simplifie les tâches d'administration

Workflow Fax - Fax Forms

- ▶ Customised fax form for each service
- ▶ Add a signature
- ▶ Fax preview before sending
- ▶ Signature management in Workflow mode



AVM
INFORMATIQUE

▶ AVM informatique
52, rue de St Genis Laval - 69540 Irigny
Tél. 04 78 56 59 13 - Fax 04 72 39 91 69
<http://www.avm-informatique.com>
e-mail: gcs@avm-informatique.com