



GLOBALCOMSERVER SMTP GATEWAY ADMINISTRATOR'S GUIDE

**© OCTOBER 2002 AVM INFORMATIQUE
(UPDATED: AOUT 22, 2006)**

LICENSE

Information in this document is subject to change without notice.

This document cannot be reproduced in any ways without AVM Informatique written authorization.

GlobalComServer is an AVM Informatique product.

GlobalComServer is protected by copyrights.

© 1999 - 2000 AVM Informatique. All rights reserved.

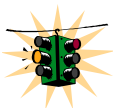
All products mentioned in this manual are trademarks of their respective owners.

TABLE OF CONTENTS

Check our web site for updates:
<http://www.avm-informatique.com/>

LICENSE	2
TABLE OF CONTENTS	3
INTRODUCTION	4
INTRODUCTION OF FAX GATEWAY FOR SMTP	4
<i>GCS Messages?</i>	4
SMTP GATEWAY ARCHITECTURE	4
REQUIREMENTS ON THE SMTP SERVER	5
CREATING A GCS E-MAIL DOMAIN IN EXCHANGE 5.5	5
CREATING A GCS E-MAIL DOMAIN IN EXCHANGE 2000	5
CREATING A GCS E-MAIL DOMAIN IN DOMINO NOTES	10
REQUIREMENTS ON GLOBALCOMSERVER SERVER	11
CREATING AN SMTP DOMAIN	11
<i>Create an SMTP domain</i>	11
<i>Quota disabling</i>	13
MICROSOFT CDO INSTALLATION	15
INSTALLATION	16
ADMINISTRATION	17
GENERAL CONFIGURATION TAB	17
MAIL OPTIONS TAB	17
<i>Outgoing messages settings</i>	18
*.eml directory	18
Domains list	19
<i>Incoming messages settings</i>	20
CDO / MAPI or AVM	20
PDF	20
From	21
Login	21
Password	21
Server	21
EVENT LOG TAB	21

INTRODUCTION



This manual is designated to the system's administrator responsible of the configuration and the maintenance of **GCS Gateway SMTP**. Well knowing Microsoft Windows NT® and SMTP's server is needed.

Introduction of fax gateway for SMTP

SMTP Gateway for GCS is a software developed by AVM Informatique. It enables the users to send and receive fax, telex, SMS from their internet inbox.

GCS Messages?

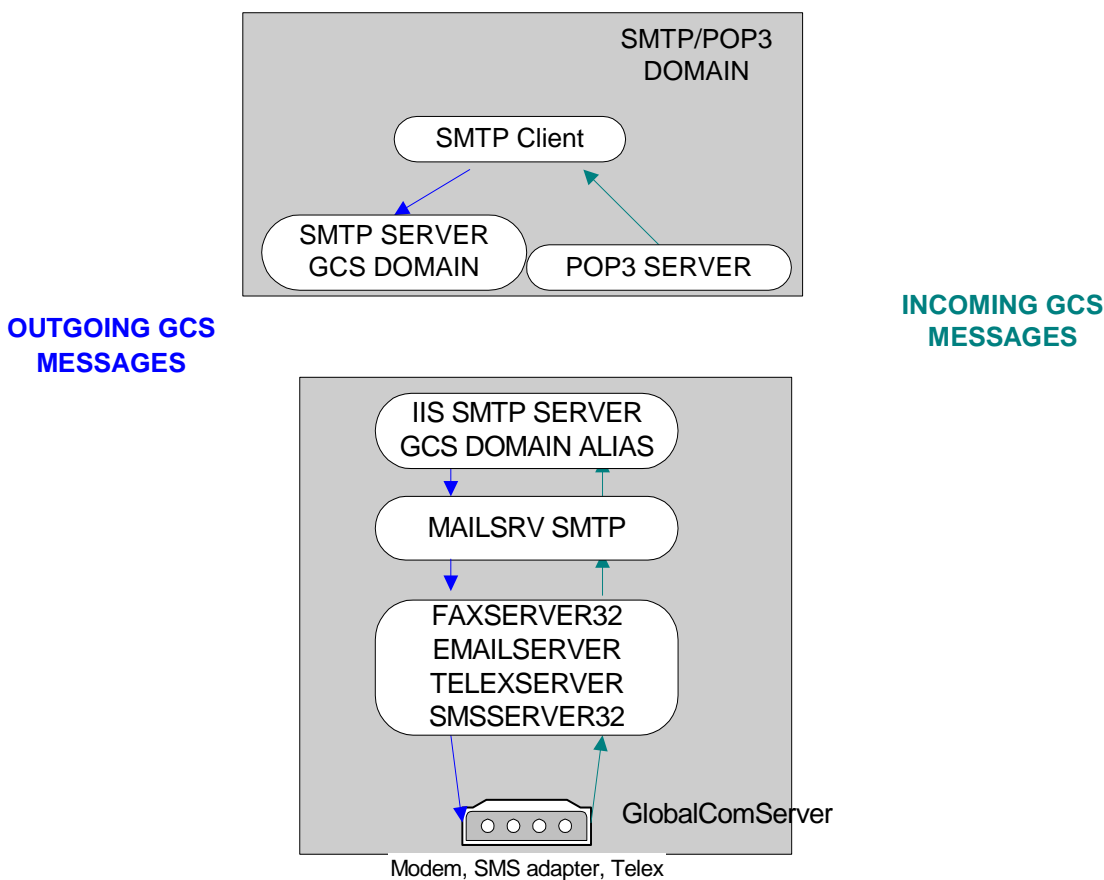
Using his mail client (Outlook Express 5®, Netscape Messenger® 4.7, Eudora® 4.3...), a user creates a message with attached files and send it.

This email is transfered by **GlobalComServer** to the recipient like a fax, telex or SMS. Then, the sender receives a sending acknowledgement in his inbox.

User can receive faxes, SMS or telexes in his inbox if the **GlobalComServer platform** has been configured to do so.

(Cf. [GlobalComServer platform - Setup menu | Incoming routing](#)).

SMTP gateway architecture



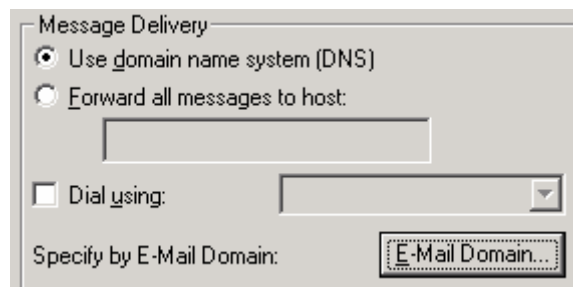
REQUIREMENTS ON THE SMTP SERVER

You need :

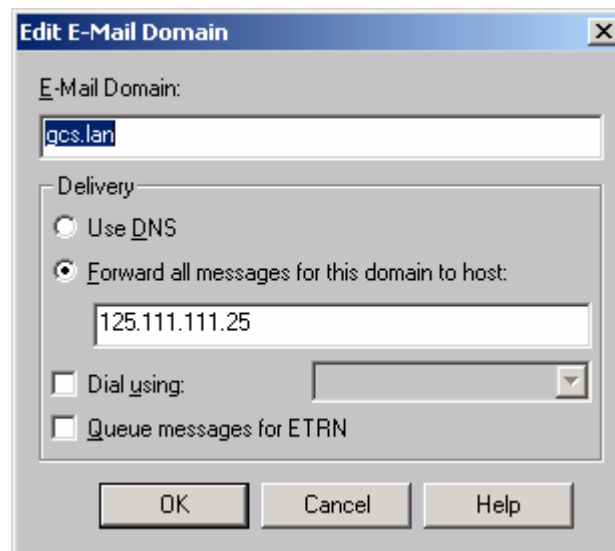
- to create a **GCS** mailbox : note its information (e-mail address, POP3 server, SMTP server, login, password), you will use these information later in the requirements on the **GlobalComServer** platform.
This mailbox will allow to get **GCS** sending requests if MAPI/Outlook client method is used, and return incoming/outgoing status.
- to declare a **GCS** SMTP domain for outgoing messages : this domain will allow to get sending requests for **GCS** messages by files.

Creating a GCS e-mail domain in EXCHANGE 5.5

Launch Exchange's administration, and select the tab **Connexions** and click on **E-mail Domain**.



Add the domain GCS LAN (you can use the domain name you want, for example FAX.LAN or FAXLOCAL.LAN or SMS.LAN, etc ...).

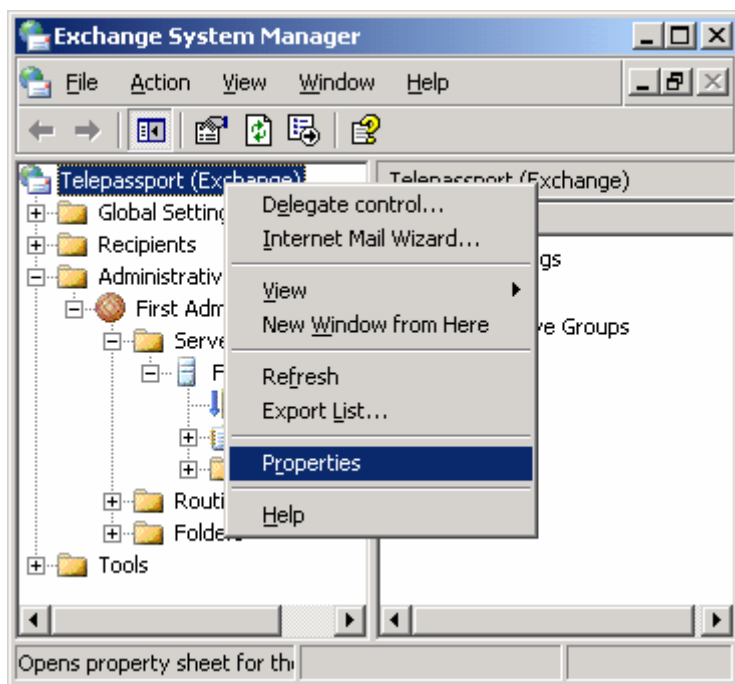


Save the modifications and restart the service **MS EXCHANGE – INTERNET INBOX**.

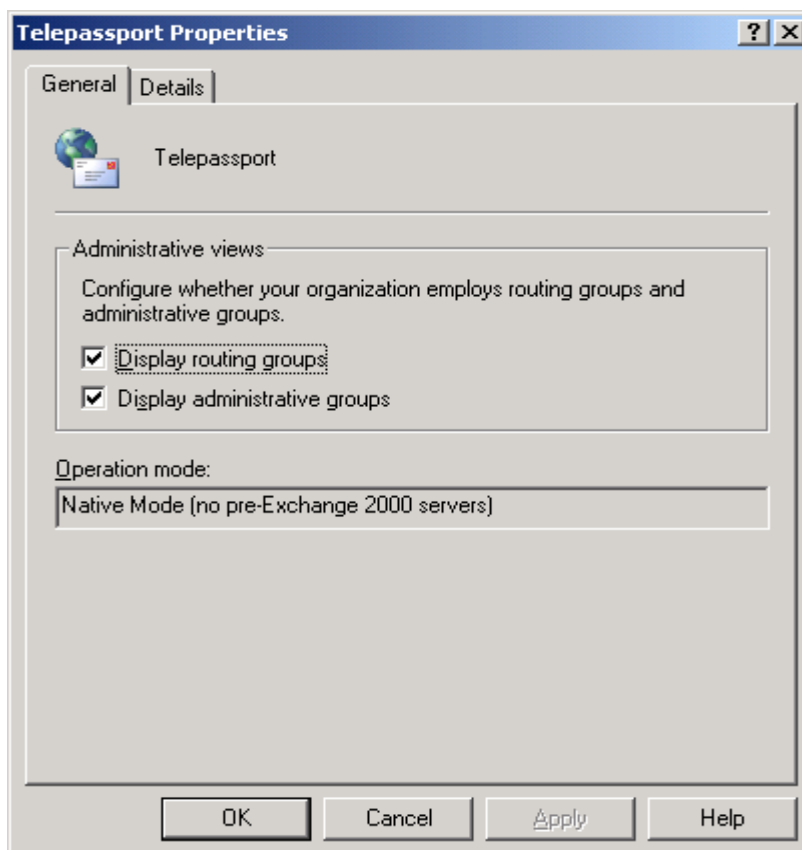
Creating a GCS e-mail domain in EXCHANGE 2000

Launch Exchange's administration, and select **Start, Programs, Microsoft Exchange, System manager**.

Right click on your site name, then select **properties** as below :



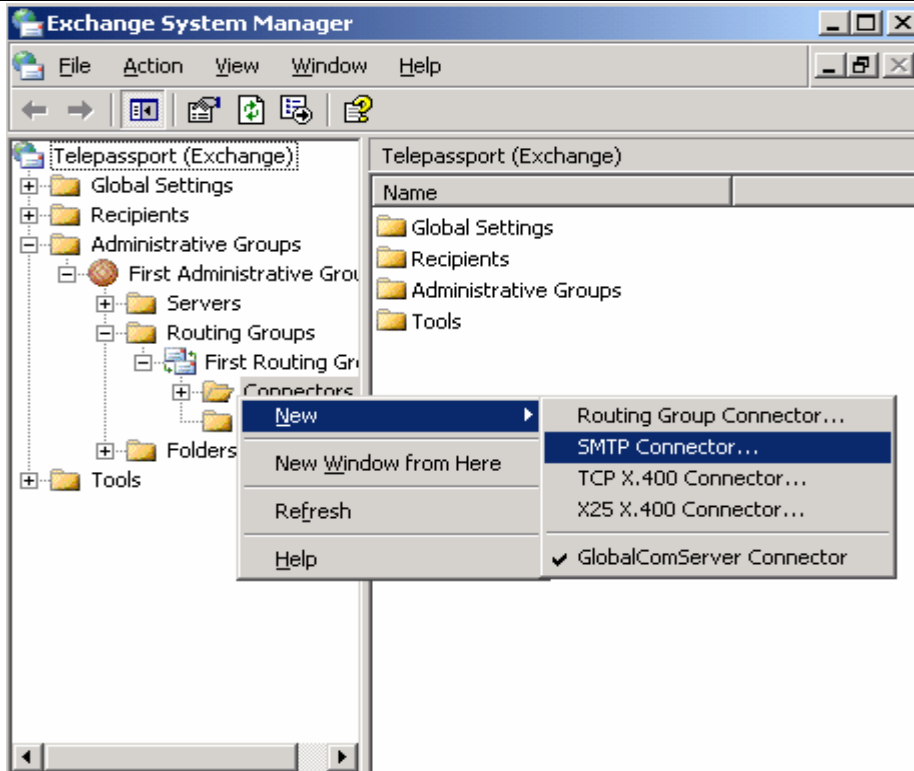
You will get the following screen :



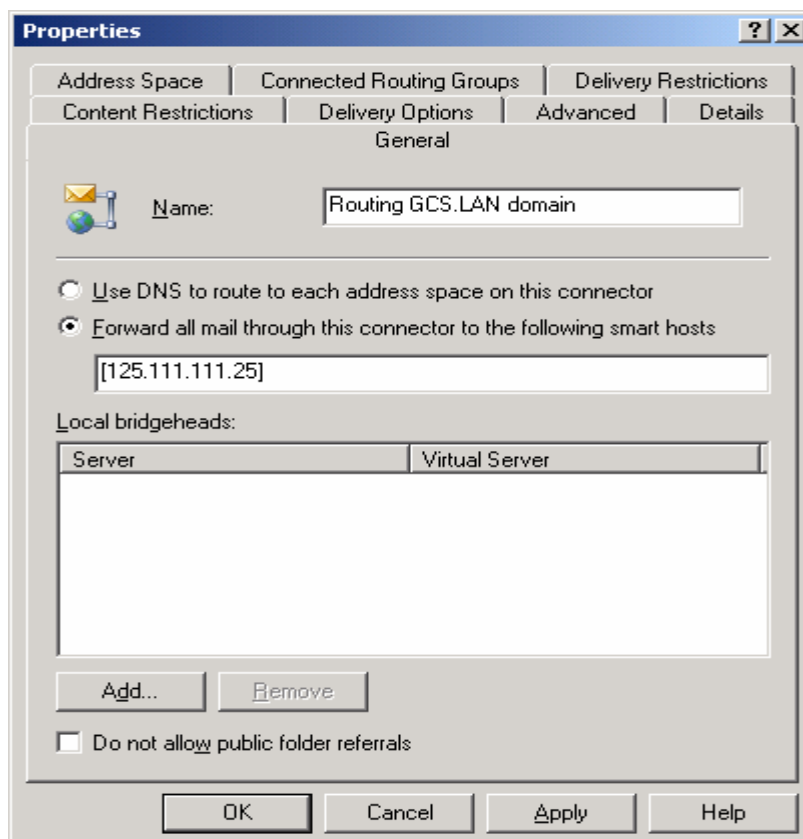
Check **Display routing groups** and **Display administrative groups**.

Then click on **administrative groups**, **routing groups**, **site's name**, then **connectors**.

Right click on **connectors**, then select **New, SMTP connector** as below :

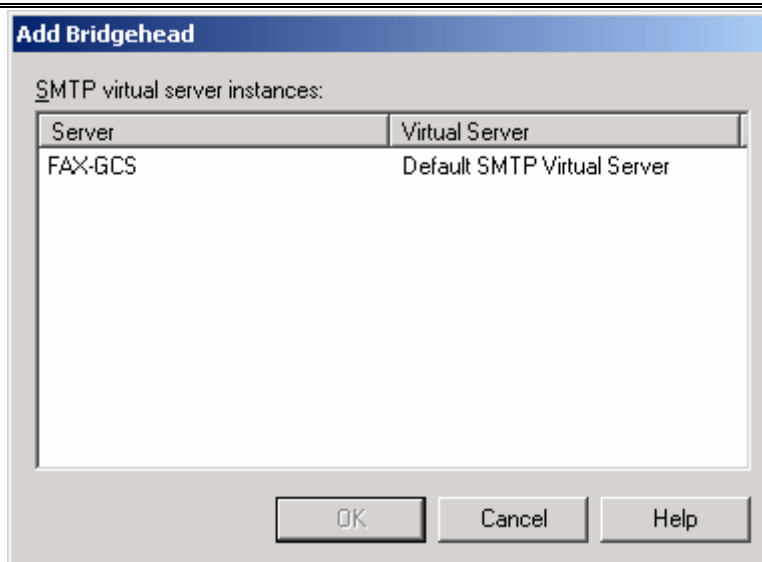


You will get the following screen :

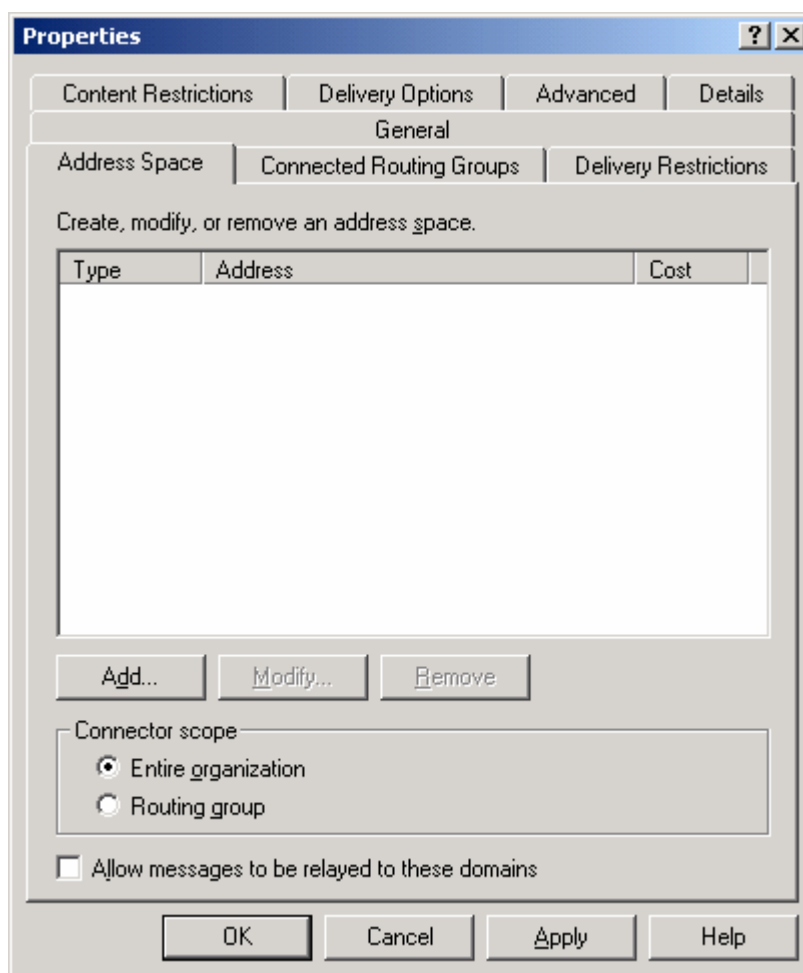


Give a name to this new connector (ex : Routing GCS.LAN domain), select **Forward all mail through this connector to the following smart hosts**, and enter the IP address between [] of your GCS server where your domain has been created (see CREATING AN SMTP DOMAIN paragraph).

Then click on **Add** button, you will get the following screen :

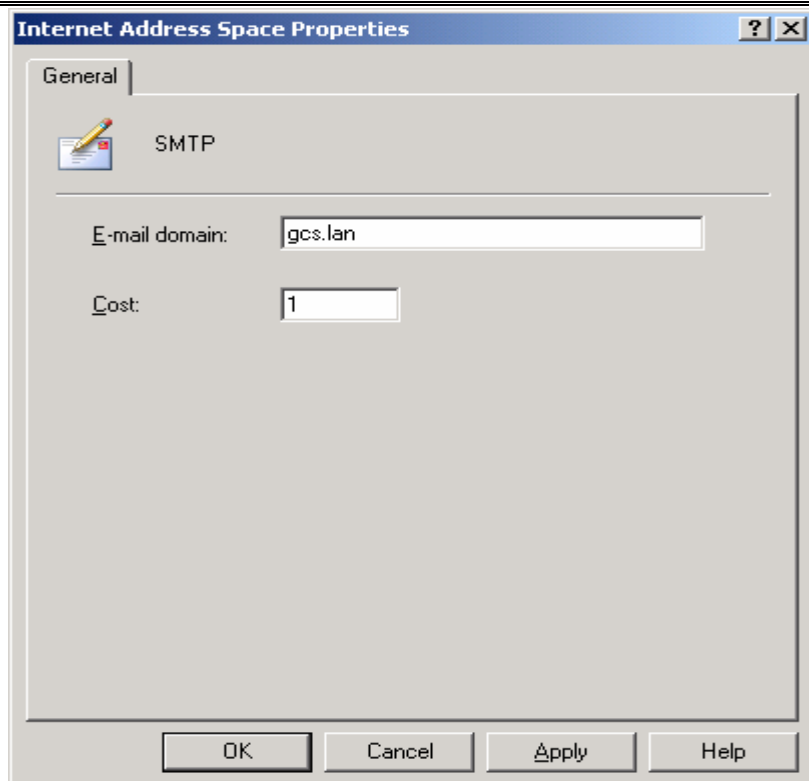


Select your Exchange server, then click on **OK**. Then select the tab **Address Space**, you will get the following screen :

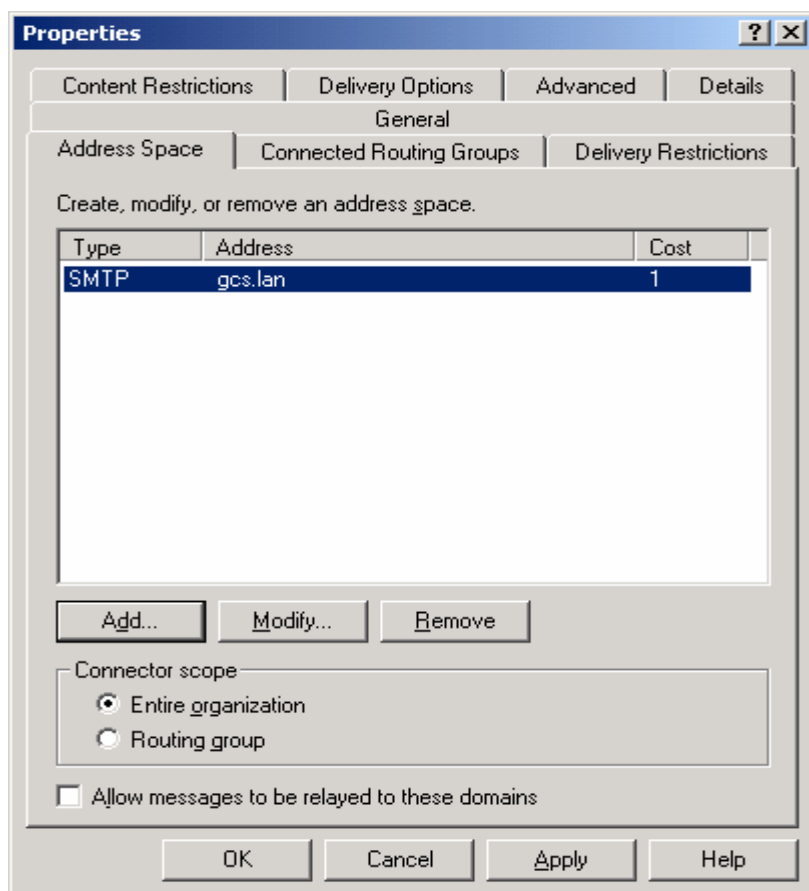


Click on **Add**.

Fill the domain's name you've created on the **GlobalComServer** server (see CREATING AN SMTP DOMAIN paragraph).



You will get the following screen :



Click on **apply** then **OK**.

Now, all e-mails you will send on the GCS.LAN domain will be routed on the IIS server of **GCS** server.

Creating a GCS e-mail domain in Domino Notes

Launch the administration of your DOMINO server (Domino Admin) ; select **Start, Programs, Lotus Applications, Lotus Domino Administrator**.

Click on **Messaging** then **Domains**, then click on button **Add Domain**.

Click on the small arrow near **Foreign domain**.

Select **SMTP foreign domain**, then click on **OK**.

Click on tab **Routing**, and fill in **Internet Domain** the domain's name you have created on the IIS of your **GlobalComServer** server (GCS.LAN or FAX.LAN etc...).

Fill in **Internet Host** the name or IP address of **GlobalComServer** server.

Click on button **Save and close**.

Now, all e-mails you will send on the GCS.LAN domain will be routed on the IIS server of **GCS** server.

REQUIREMENTS ON GLOBALCOMSERVER SERVER

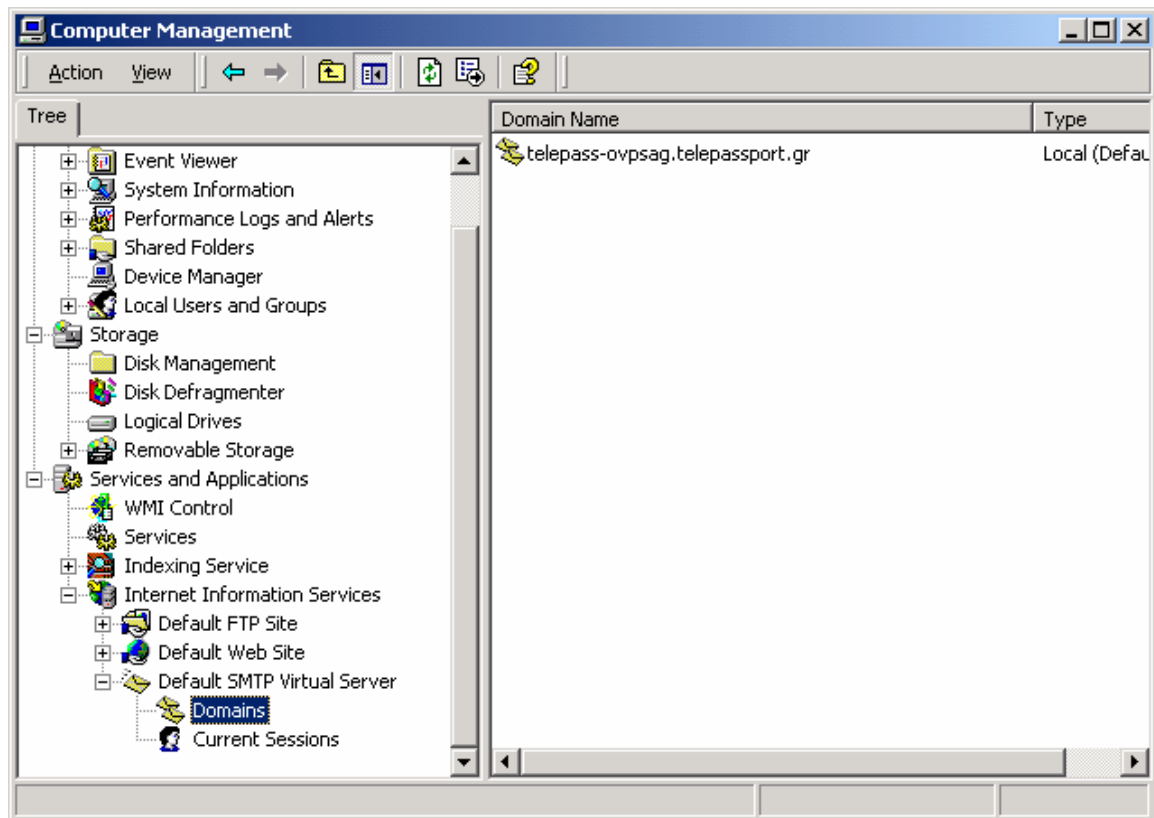
Creating an SMTP domain

This SMTP domain is necessary to send GCS messages.

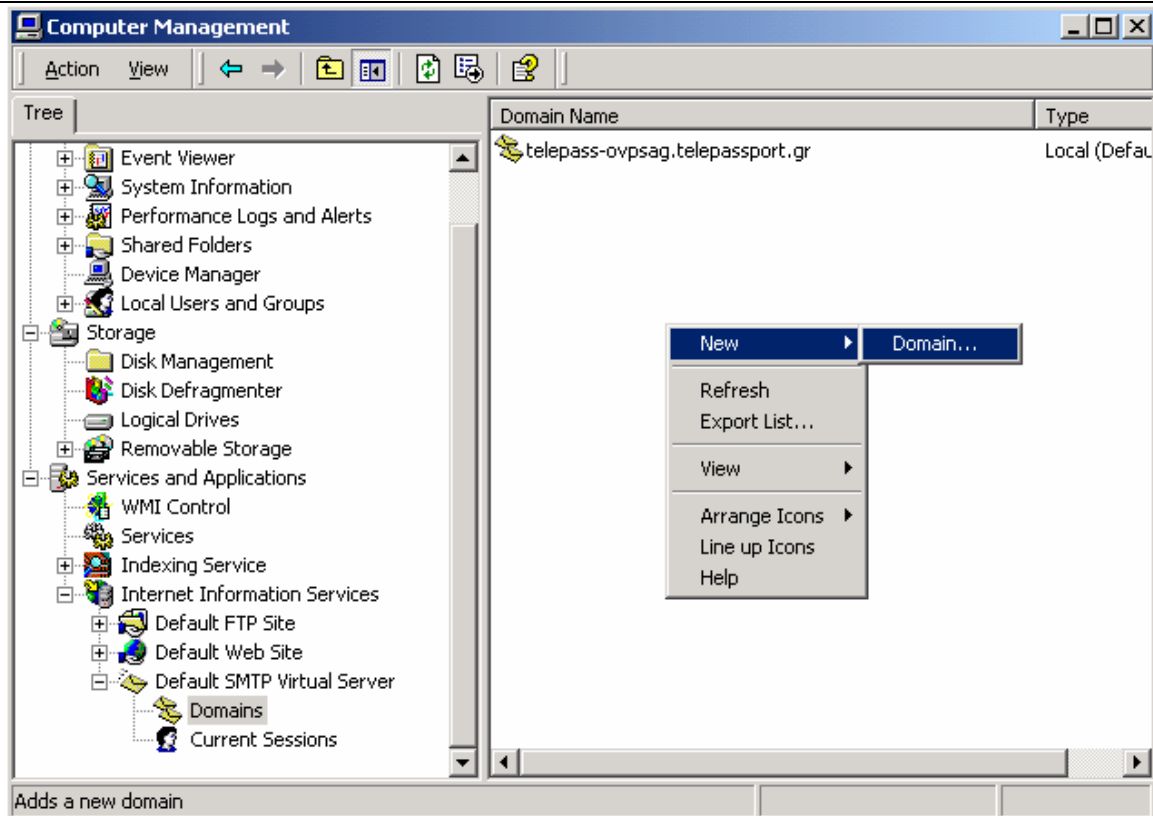
Create an SMTP domain

To create an SMTP domain on **GlobalComServer** server, you have to select in **Add/Remove programs, Add or remove Windows Components, Internet Services (IIS)** (for Windows 2000 and XP) or **Application Server, Internet Information Services (IIS)** (for Windows 2003), and **details**, check **SMTP Service**.

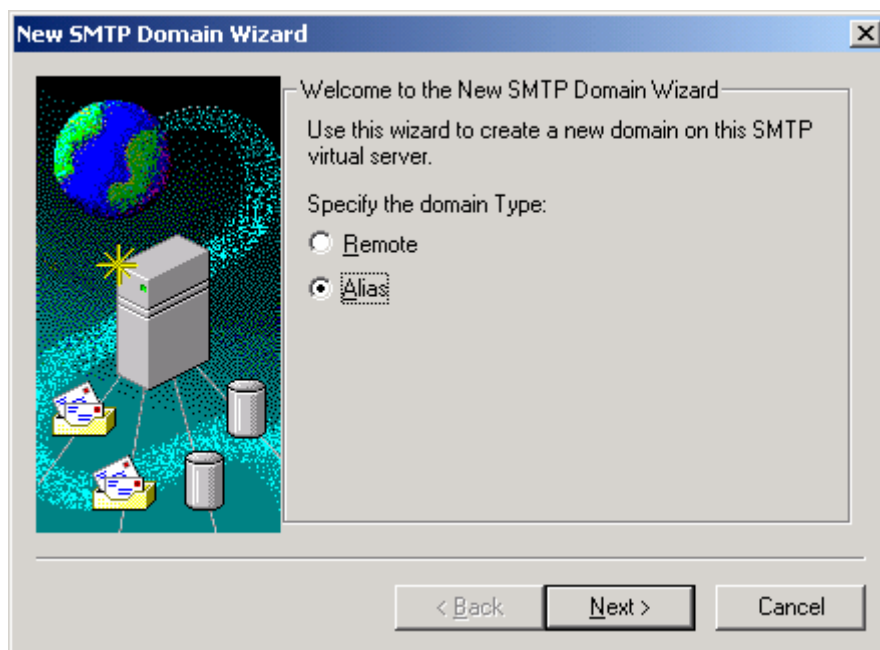
Then right click on **My computer** and select **Manage**. Select **Services and Applications, Internet Information Services, Default SMTP Virtual Server** and **Domains** as in the following example :



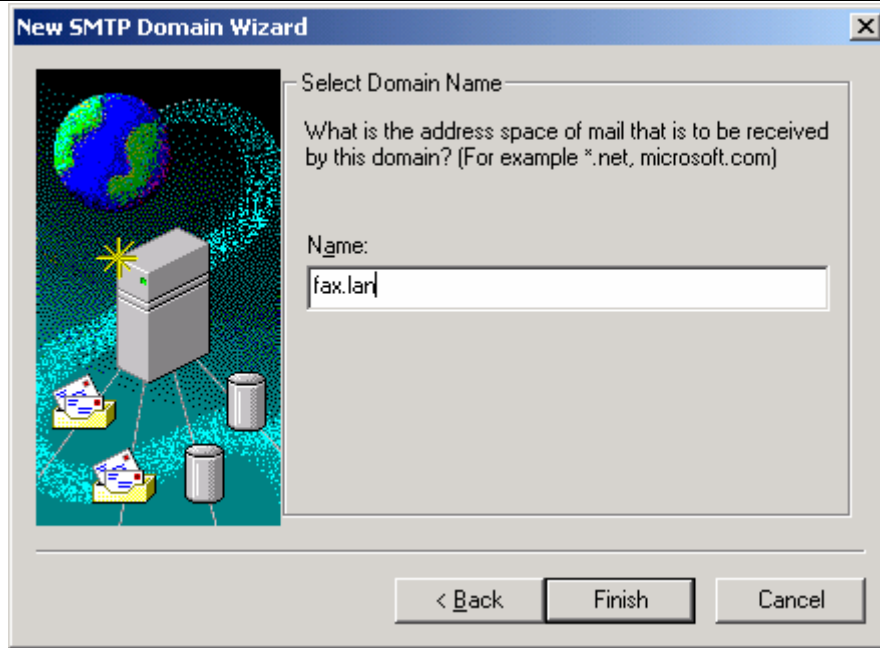
Right click on **Domains** then **New, Domain** as below :



Click on **Alias**, and **Next**.

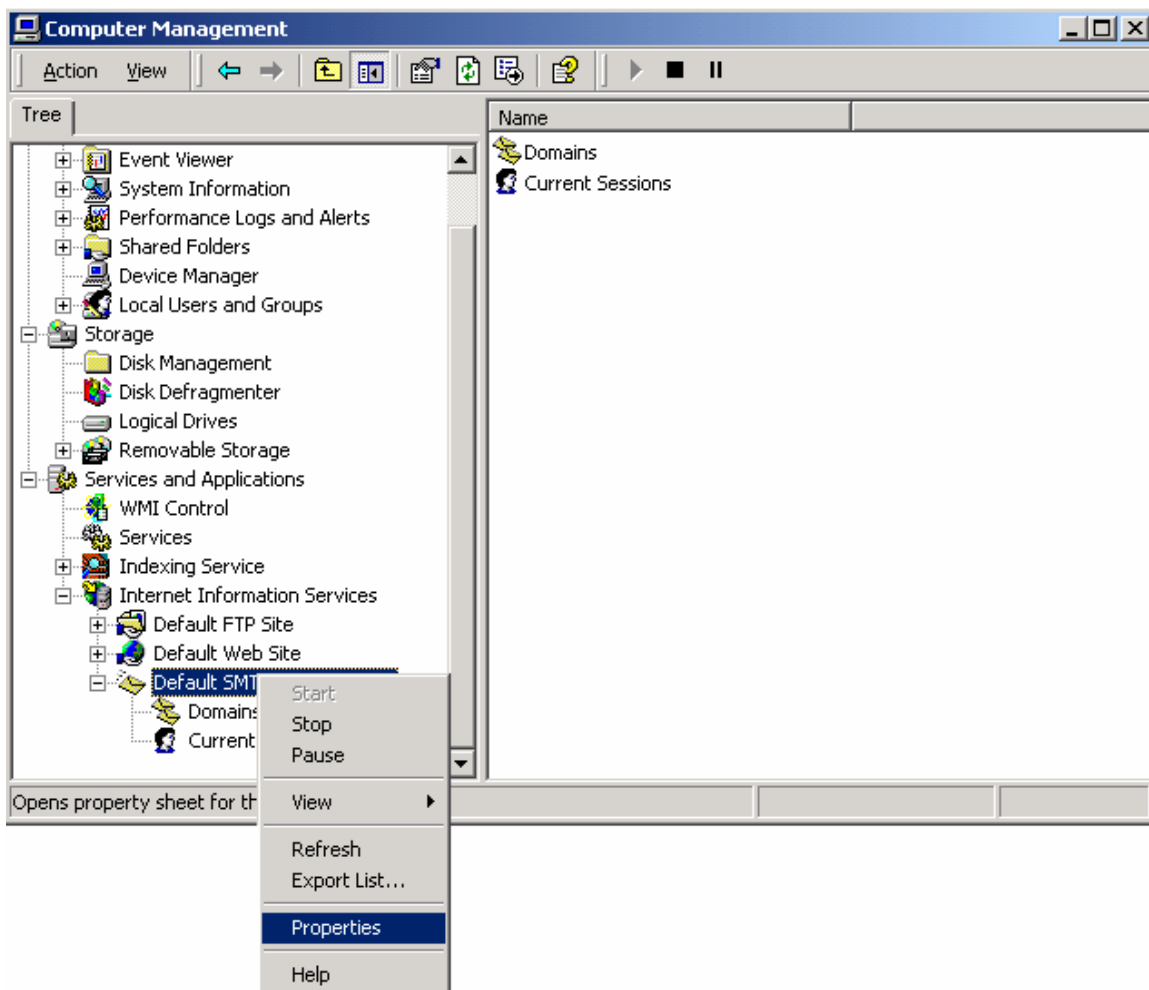


Give a name to the domain, and click on **Finish**.

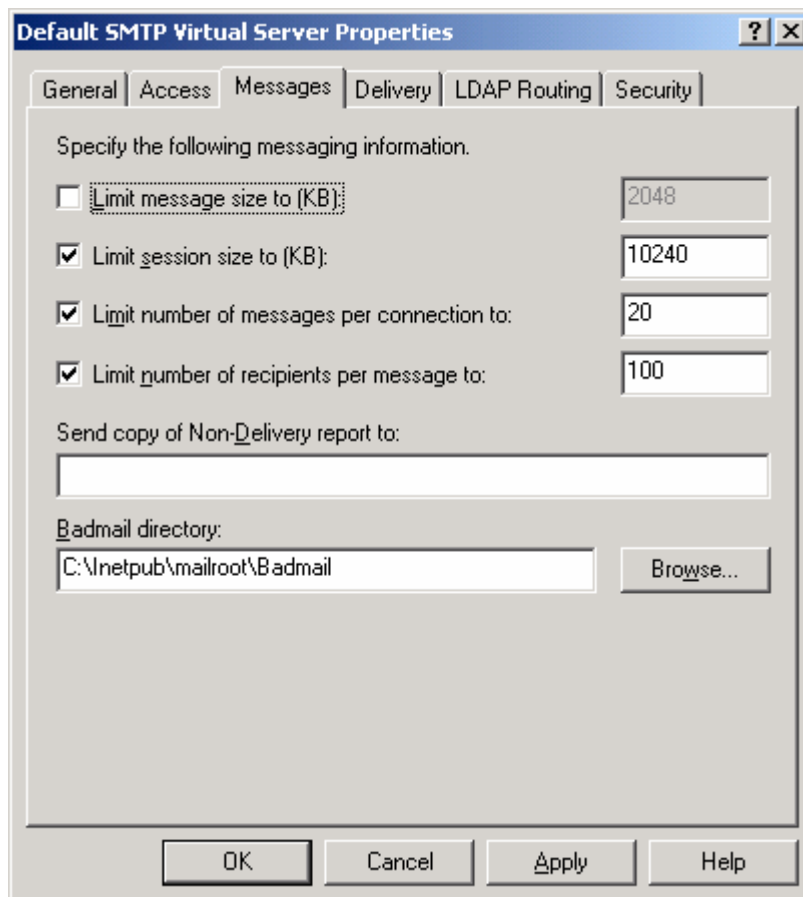


Quota disabling

Right click on **My computer** and select **Manage**. Select **Services and Applications**, **Internet Information Services**, **Default SMTP Virtual Server**, then **Properties** as in the following example :

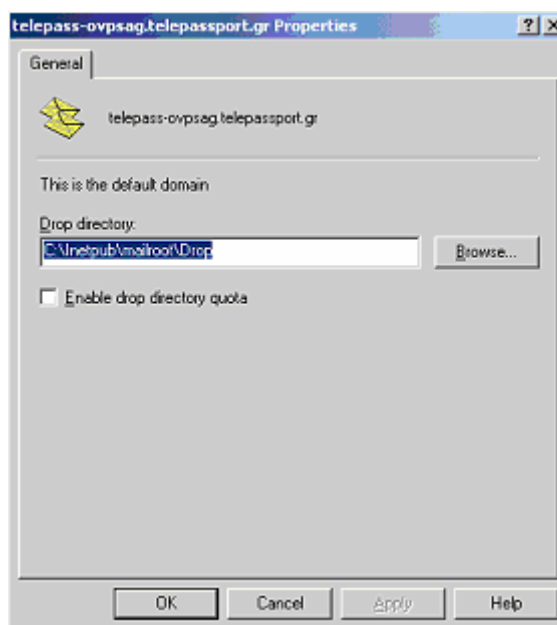


Select the tab **Messages**, then uncheck **Limit message size to (KB)** as in the following example:



Then click on **Apply**, and **OK**.

Select **Domains**, then select the local default domain, and right click on **Properties**.



Uncheck **Enable drop directory quota**.

Microsoft CDO installation

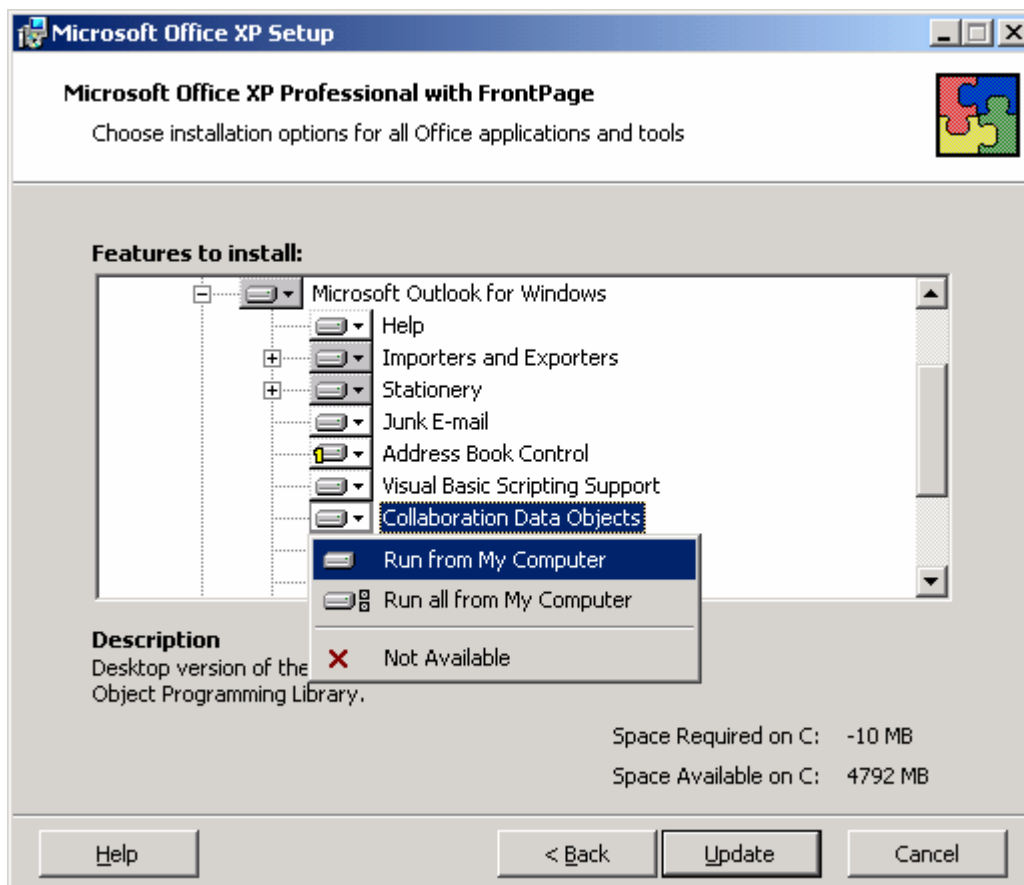
This CDO module is necessary for incoming/outgoing status.

To install the CDO, you need the Microsoft Outlook 2000/2002/2003 CD or Microsoft Office 2000/2002/2003 CD.

Insert the Microsoft Outlook or Microsoft Office CD, launch the SETUP, and click on next until the components select screen appears.

Select in **Microsoft Outlook for Windows** then line **Collaboration data Objects**, click on **Run from my computer**.

We advise you to install Microsoft Word, Excel and Powerpoint to convert in fax format the attached files.

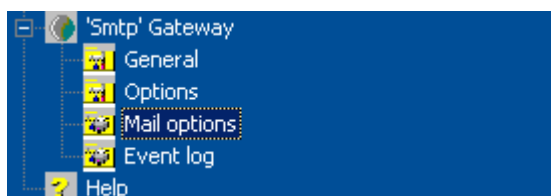


INSTALLATION

Have a look to [GlobalComServer platform](#) if you have never installed any AVM products.

ADMINISTRATION

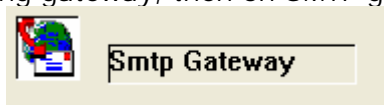
Connect to the **GlobalComServer** administration.



Develop the **SMTP Gateway** menu.

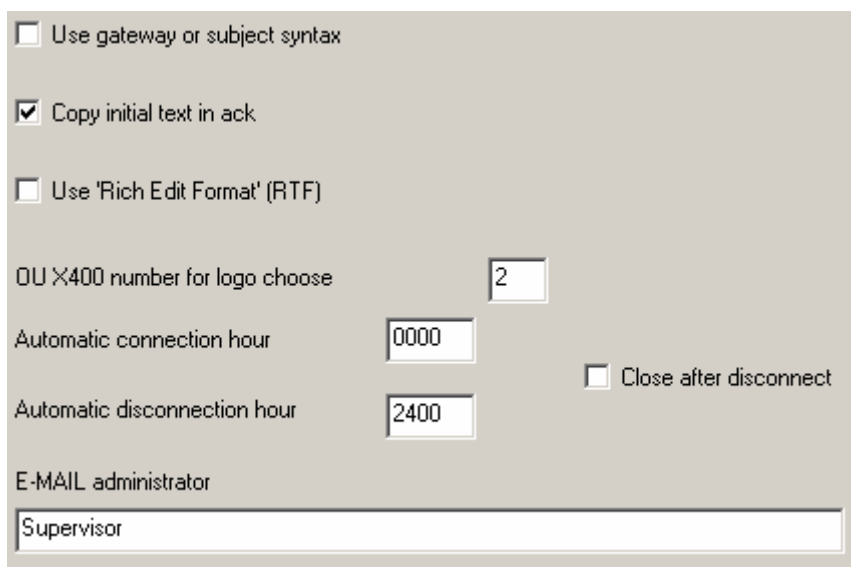
If you have several gateways installed on **GlobalComServer platform**, the gateway's name might be different from SMTP.

In this case, click on the messaging gateway, then on SMTP gateway on the right part.



General configuration tab

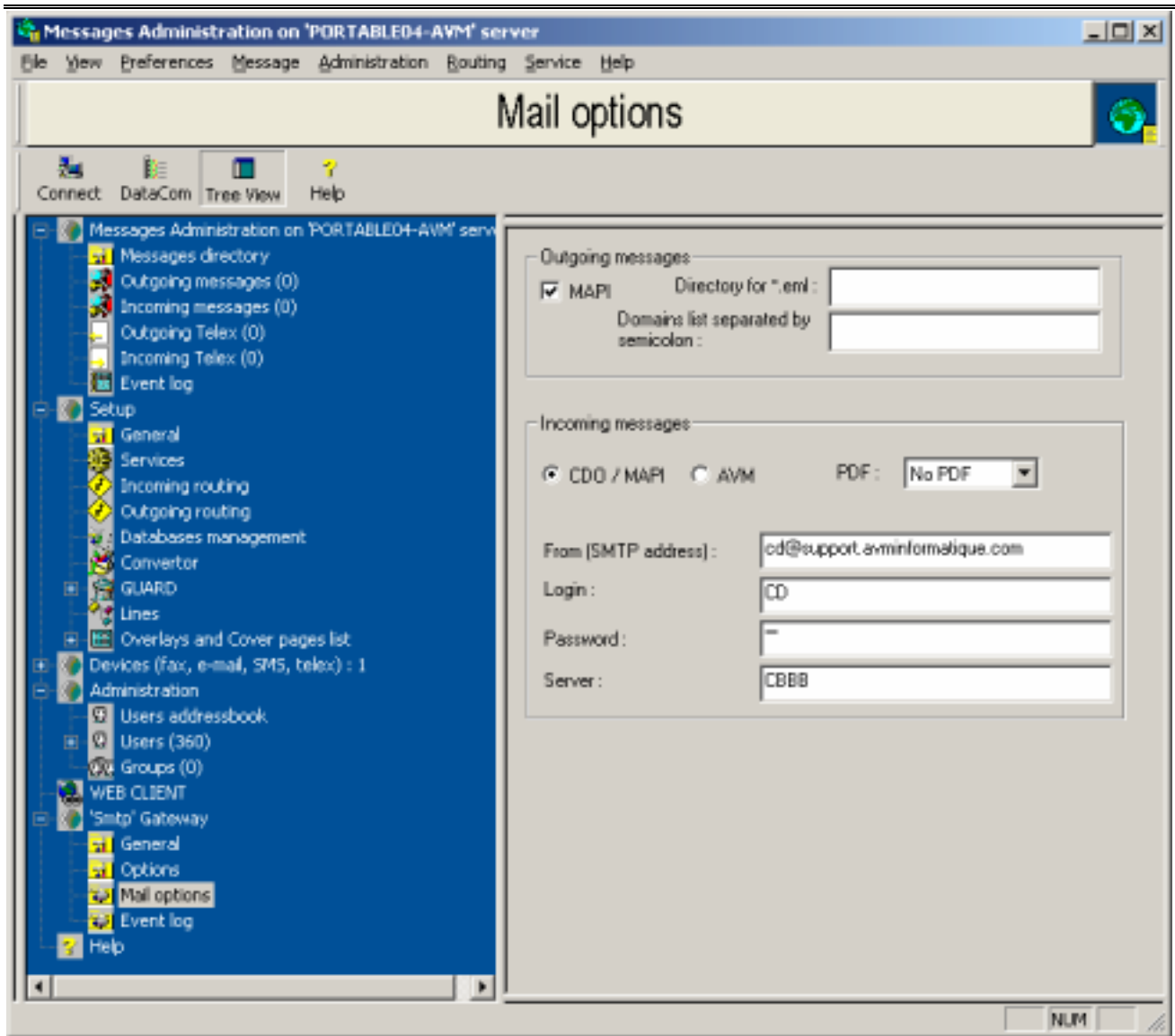
This screen is no more used for the SMTP gateway.

A screenshot of a configuration window titled "General configuration tab". It contains several settings:

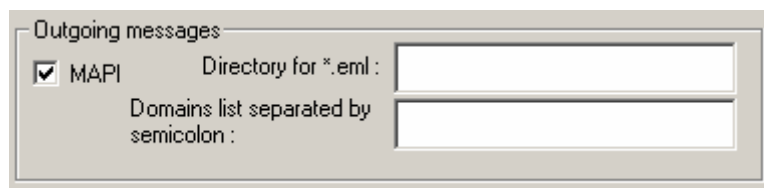
- Use gateway or subject syntax
- Copy initial text in ack
- Use 'Rich Edit Format' (RTF)
- OU X400 number for logo choose:
- Automatic connection hour:
- Automatic disconnection hour:
- Close after disconnect
- E-MAIL administrator:

Mail options tab

To configure the SMTP gateway, enter in GCS administration, SMTP gateway, Mail options.



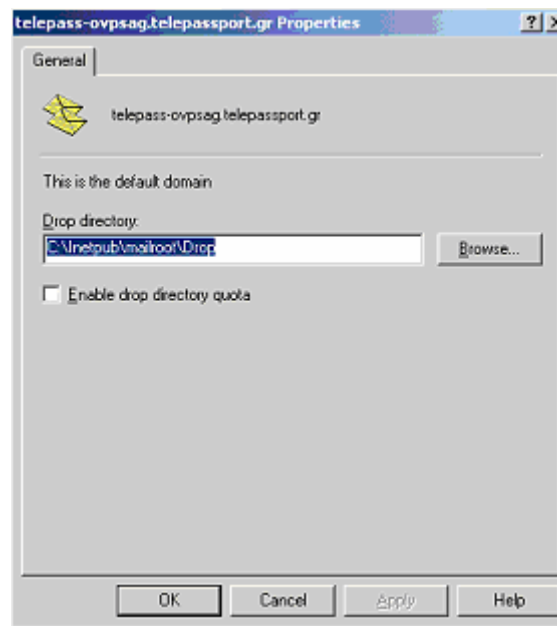
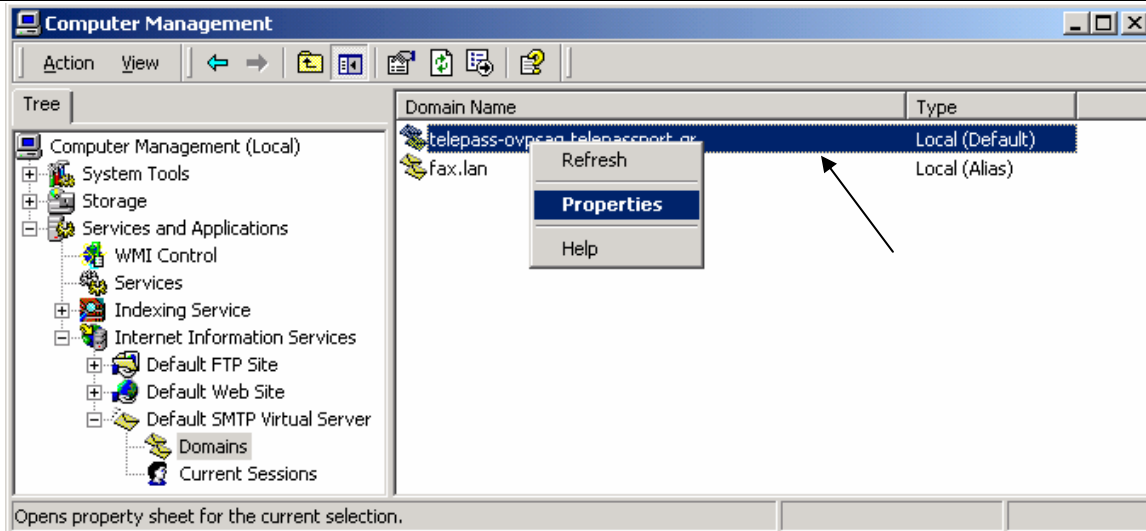
Outgoing messages settings



***.eml directory**

Copy the « Drop directory » (« C:\inetpub\mailroot\Drop » by default).

Example :



In this example :

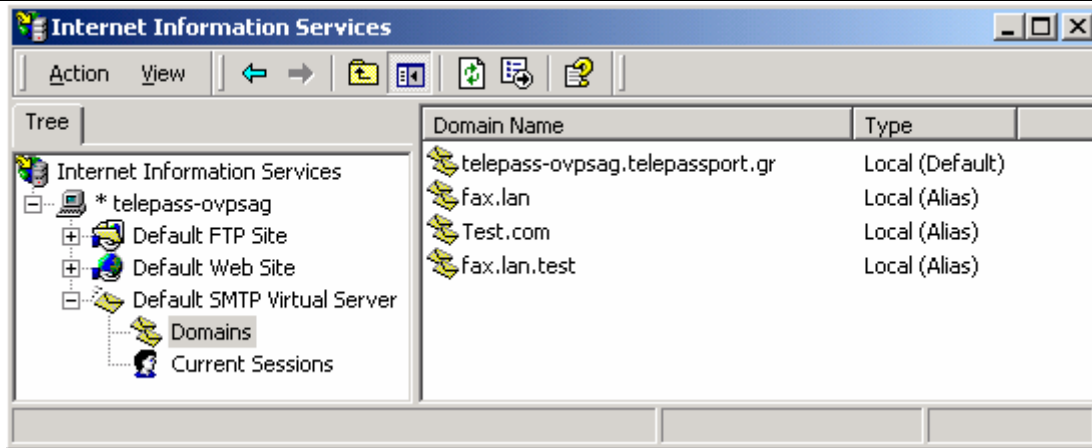
*.eml directory = C:\inetpub\Mailroot\Drop

Each sent element arrives as a file with an .eml extension in Drop directory, then is moved by **AVM – GCS SMTP** service, if the SMTP domain's recipient is defined in the field **domains list** in **outgoing messages** settings.

Domains list

Enter the names of domains that will be processed by the SMTP gateway, separated by semicolon ";".

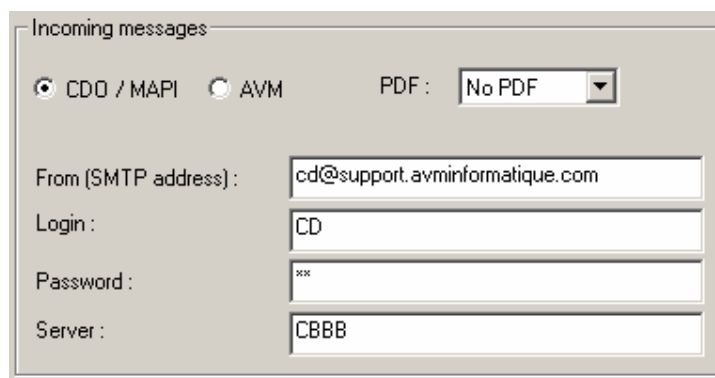
Example :



For this example :

Domains=fax.lan;fax.lan.test

Incoming messages settings



CDO / MAPI or AVM

Enables to define which way is used to send incoming/outgoing status.

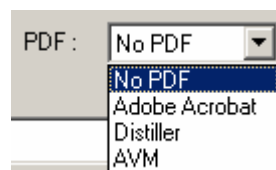
CDO / MAPI : the incoming messages are returned back in messaging by **AVM – GCS SMTP** service (**this option is recommended**).

AVM : the incoming messages are returned back in messaging by **AVM – GlobalComServer** service.

If you select this option, you must have configured the view **Settings, General**, then button **Advanced** of the administration tool. For more details, see **GlobalComServer platform** document.

PDF

Enables to define the way used to convert the fax (in TIFF format) in PDF format.



No PDF → the sending status and incoming faxes are sent in TIFF format.

Adobe Acrobat → TIFF files are opened by Adobe Acrobat, then saved in PDF format (for this option, you must install Adobe Acrobat 5.0 or later on the **GlobalComServer** server).

Distiller → TIFF files are printed on Acrobat Distiller printer (for this option, you must install Adobe Acrobat 5.0 or later on the [GlobalComServer](#) server).

AVM → TIFF files are converted by [GlobalComServer](#) with TIFFJUNCTION program : **this option is strongly recommended.**

From

From (SMTP address) :

E-mail address of mailbox configured for incoming/outgoing status.

Login

Login :

Login of mailbox configured for incoming/outgoing status.

Password

Password :

Password of mailbox configured for incoming/outgoing status.

Server

Server :

Messaging server name hosting the mailbox configured for incoming/outgoing status.

Event log tab

View information about outgoing, incoming, erroneous GCS messages, following the day of the week.



Different control messages appear in the window **Warning**.

A few help:

« Problems of products license »

The SMTP gateway does not appear in the protection key.
(Cf. [GlobalComServer platform – Troubleshooting | protection key validation](#))

« Problems of user license »

Only if [GlobalComServer](#) license has a limited users number. It means that the user is not defined in [GlobalComServer](#) administration.

So, you have to add this user.

(Cf. [GlobalComServer platform – users/groups administration](#))

Learn to send a GCS message through the SMTP gateway with the user's guide.
