



GLOBALCOMSERVER ARCHIVE SERVER ADMINISTRATOR'S GUIDE

**© OCTOBER 2002 AVM INFORMATIQUE
(UPDATED: AUGUST 22, 2006)**

LICENSE

Information in this document is subject to change without notice.

This document cannot be reproduced in any ways without AVM Informatique written authorization.

GlobalComServer is an AVM Informatique product.

GlobalComServer is protected by copyrights.

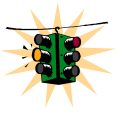
All products mentioned in this manual are trademarks of their respective owners.

TABLE OF CONTENTS

Check our web site for updates:
<http://www.avm-informatique.com/>

- LICENSE..... 2**
- TABLE OF CONTENTS 3**
- PRESENTATION 4**
 - GCS Archive Server presentation 4**
- PRE-REQUIREMENTS 5**
 - How the server module works 5**
- INSTALLATION..... 6**
- CONFIGURATION..... 10**
 - First run after installation..... 10**
 - Server module configuration 11**
 - Folders tab..... 11
 - Advanced tab..... 12
 - Import / Export tab 12
 - Export the database 12
 - Empty databases after export..... 13
 - Import the databases..... 13
 - Empty databases before import 13
 - Import / Export file name 13
- ARCHIVING..... 14**
 - Launching the module..... 14**
 - Using AT commands 14
 - Protecting the database with a password..... 15**
- INCOMING FAX MENU 16**
- OUTGOING FAX MENU..... 17**
- QUERIES..... 18**
- PRINTING QUERY RESULTS 21**
- TROUBLESHOOTING 22**
 - Using the module on a PC with Access2000 installed..... 22**

PRESENTATION



This manual is designated to the system administrator responsible for installation, configuration and maintenance of the GCS Archive Server. Knowledge of Microsoft Windows NT® is recommended.

GCS Archive Server presentation

The **GCS Archive Server**, software developed by AVM Informatique, is a component of the AVM Informatique **GlobalComServer** platform.

This module allows you to automatically archive messages sent or received by **GlobalComServer**.

Then install the **GCS Archive Client** on remote machines to let your users browse with ease through the archive.

PRE-REQUIREMENTS

GlobalComServer software must be installed on your network

The necessary disk space depends on your message volume

On the GCS platform edit the file `..\Traffic\etc\topsrv32.ini` and change one line in the **[options]** section:

[Options]

archive=1

How the server module works

The archive module must be running to archive your messages.

Run the module by clicking on the menu

Start → Programs → GlobalComServer → Archive → Server



You can also use **AT commands** to run the module periodically so as to avoid a too big a load on your GCS platform.

(See [Launching the module](#))

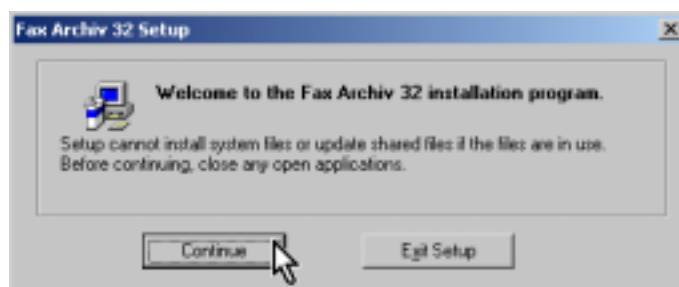
INSTALLATION

Extract the installation files from archiveserver.exe to C:\GCS.

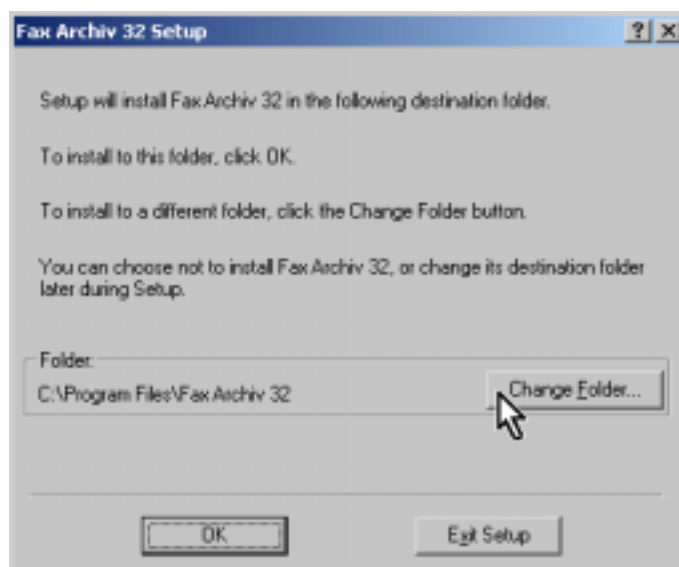
Run the **GCS Archive Server** setup

C:\GCS\archiveserver\setup.exe

Click **Continue** to skip the **Welcome** screen



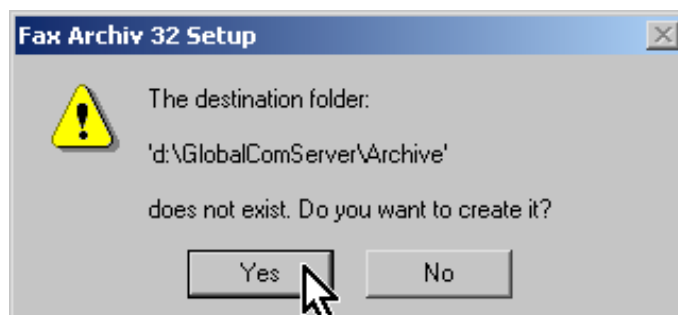
You can change the installation folder if you wish



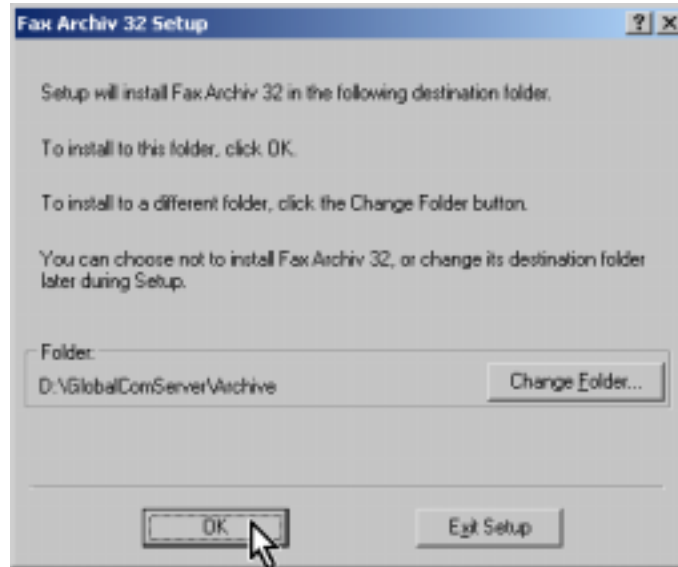
Choose your installation folder and click **OK**



Click **Yes** if you need to create the folder



Click **OK**



IMPORTANT

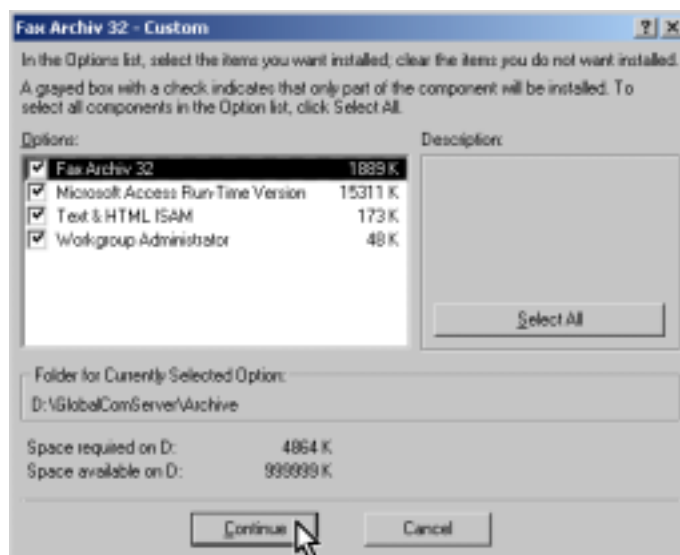
Choose the custom installation



The custom installation will allow you to use the archiving module even if you do not have Access97.

If you have installed Access2000, it is mandatory to choose the custom installation with all options selected.

Select all components and click **Continue**



The installation is over, a group called Archive has been created in the **Start → programs → GlobalComServer** menu.

This group contains a server icon.



CONFIGURATION

First run after installation

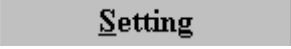
Click    



- 1 **To exit the consultation module**
Select File → Exit Archive to exit and log off.
- 2 **To change the database password (exclusive mode only)**
See [Protecting the database with a password](#)
- 3 **Reports printing setup**
This menu helps you configuring later reports printing
(See [Printing query results](#))
- 4 **Last update**
- 5 **Last update of the incoming message database**
- 6 **Last update of the outgoing message database**
- 7 **Browse the incoming message database (view, queries, print reports)**
(See [Incoming message menu](#))
- 8 **Browse the outgoing message database (view, queries, print reports)**
(See [Outgoing message menu](#))
- 9 **Server module configuration**
(See [Server module configuration](#))
- 10 **To exit the consultation module**

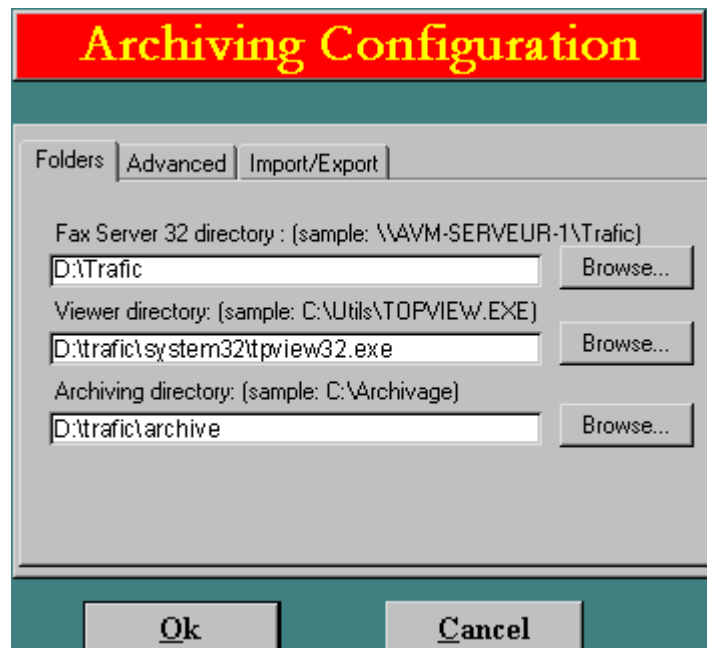
Server module configuration

Configure the server module by clicking on the **Settings** button

(Button 9 ).

Folders tab

In the following example, we will assume the GCS platform is installed on drive **D** and a folder called archive has been created in **..\Traffic**



GlobalComServer directory

..\Traffic folder path (can be local or UNC)

Viewer directory

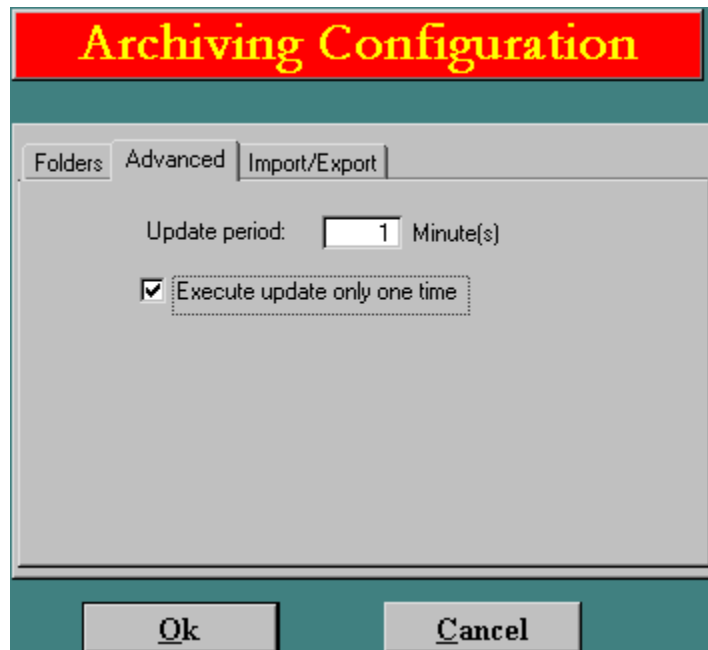
Complete path of **Tpview32.exe** (AVM image viewer)

Archiving directory

Folder where all your messages will be archived (you may have to create the folder before choosing it)

Make sure you have sufficient disk space. **..\Traffic\dep** and **..\Traffic\arri** Tif files will be copied in this folder.

Advanced tab

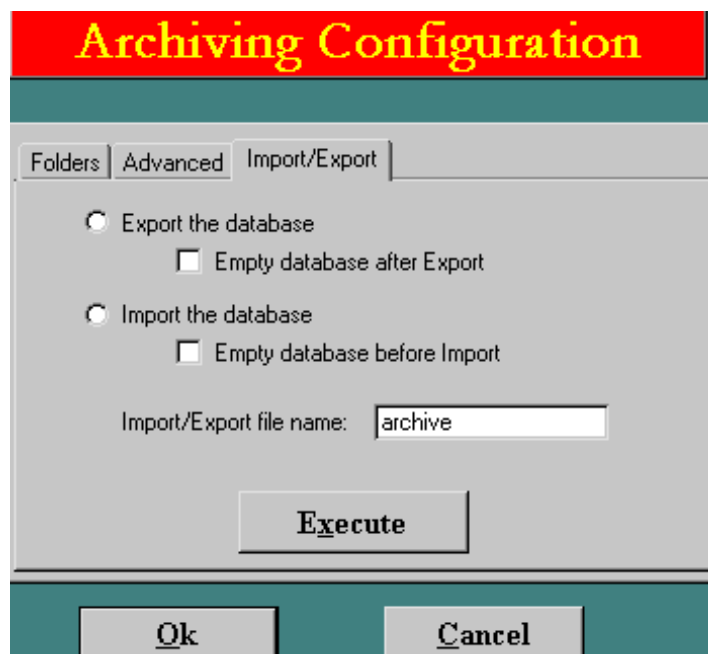


By default there is one archive session per minute when the module is running (the focus needs to be on the main screen).

If you wish to run periodically the module using **AT commands** you must check **Execute update only one time**.

(See [Using AT commands](#))

Import / Export tab



You can export the message databases to html format or import from html format

Export the database

Convert the current message database to html (web page)

Empty databases after export

Purges the message database after exporting to html.

Import the databases

Convert html database to mde (MS-Access)

Empty databases before import

Purges the current message database before importing from html

Import / Export file name

Define which name will be used.

Example:

As it is shown on the above screen, the html files will be called:

archive-SEND.html

archive-RECEIVE.html

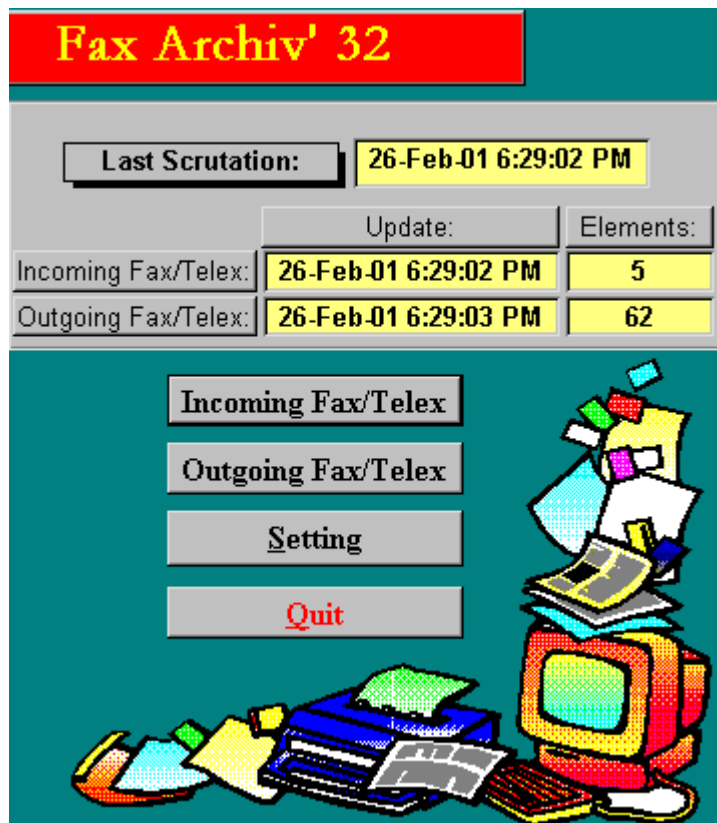
Click Execute to run the specified command

ARCHIVING

Launching the module

Use the **Start menu** icon to start the module.

To archive, the module must be running and positioned on the main screen for a minute at least.



In that case the module will archive every minute (by default). If you change screen or if you stop the module, archiving will stop.

The load due to the archive module is very important.

Thus you could prefer using AT commands to launch periodically the module.

Using AT commands

The NT task scheduler service must be installed and running in order to use **AT commands**. Set the archive module to [update only once](#).

In the following examples, we will assume that **GCS Archive Server** has been installed (with all options) in **D:\GlobalComServer\Archive**.

Create a batch file called **archive.bat** in **D:\Traffic**
D:\Traffic\archive.bat

Edit **archive.bat** using **MS-DOS commands** or a simple text editor.
 The command line to run the archive module is:

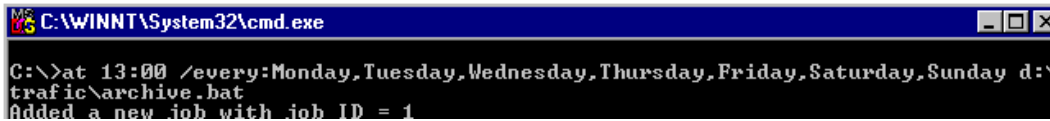
```
D:\globalcomserver\archive\office\msaccess
"D:\globalcomserver\archive\faxser ~ 1.mde"
```

Save and close **archive.bat**.

Open an **MS-DOS window**.

Write the following **AT command** and press **Enter**

```
at 13:00 /every:Monday,Tuesday,Wednesday,Thursday,Friday,Saturday,Sunday
d:\traffic\archive.bat
```



This will run the module in the background.

If you want to see the module when it is running you must add **/interactive** after the time.

```
at 13:00 /interactive
/every:Monday,Tuesday,Wednesday,Thursday,Friday,Saturday,Sunday
d:\traffic\archive.bat
```

You can check what **AT command** is in use in your computer by typing **AT** at the prompt and pressing **Enter**.

It is necessary to launch at the archive server module using an AT command at least once, in order to run the module configuration (even if you have done it before). The AT service account is different than the one you are logged with.

Protecting the database with a password

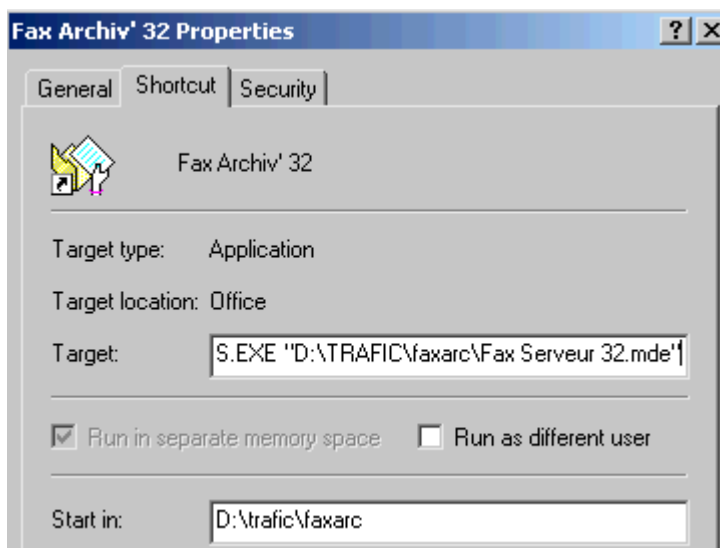
You must open the mde database in exclusive mode to define or change a password. To do so, create a shortcut as follows:

Target:

```
"D:\globalcomserver\archive\Office\MSACCESS.EXE"
"D:\globalcomserver\archive\Faxser~1.mde" /excl
```

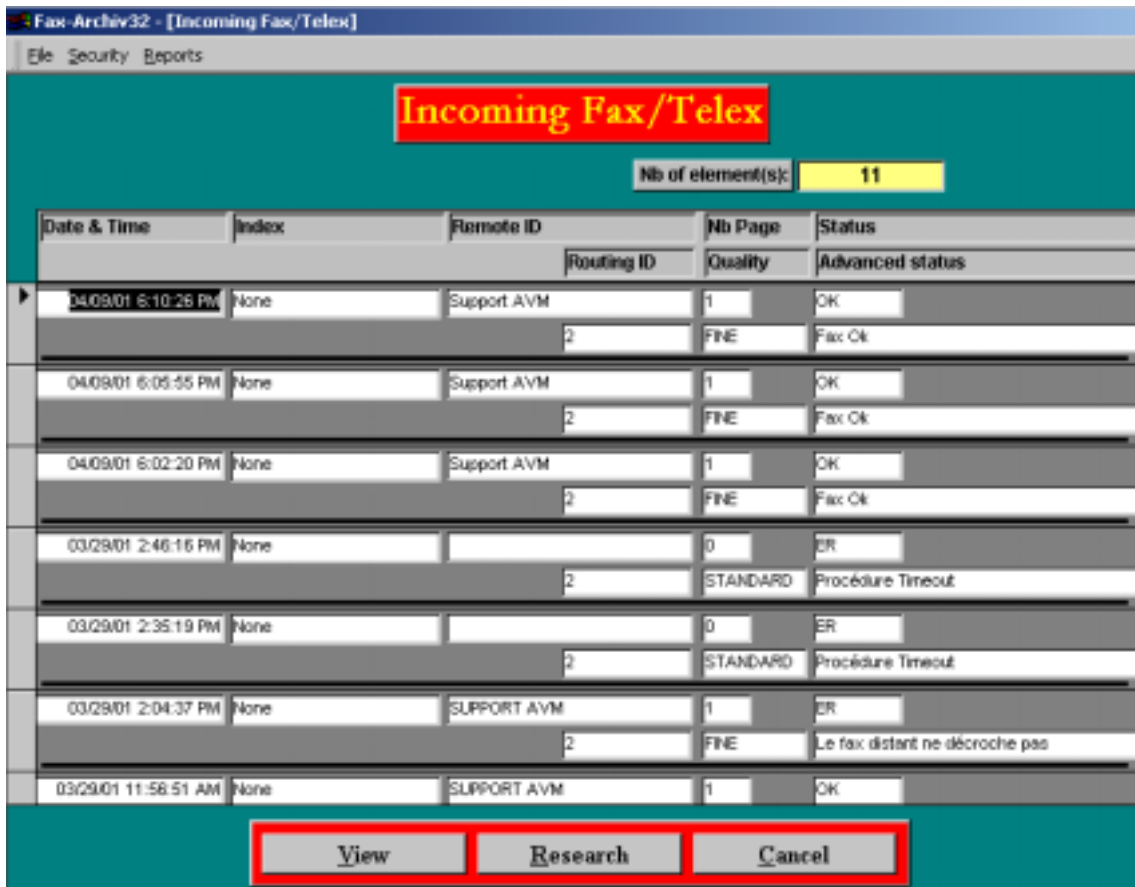
Start in:

```
"D:\globalcomserver\archive"
```



If you define a password and if you use an AT command to start the module, it will hang when asking for the password.

INCOMING FAX MENU



Browse the incoming fax database by scrolling down.

To view a fax, click on its row or in one of its fields and click on **View**.

The **Back** button sends you back to the previous screen (in that case, back to the main menu).

The **Research** button brings you to the query screens (See [Queries](#)).

The fields of this screen are:

- Date & time : when the fax has been received
- Index : you can enter a subject in this field (useful for later queries)
- Remote ID : distant fax machine CSID
- Routing ID : routing index used when receiving that fax
- Nb page : number of pages received
- Quality : received fax resolution (**standard** or **fine**)
- Status : received fax status (**Ok** or **Error**)
- Advanced status : incoming fax detailed status

OUTGOING FAX MENU

Date & Time	Sender	Recipient	Subject	Cover page	
Origin	Recipient Company	Fax number	Page	Time	Advanced Status
04/24/01 3:08:33 PM	014194610	3497		@REME01	
	SAPFAX		014505124	0	0 s. Le fax a été stoppé manuellement
04/24/01 2:20:47 PM	014194610	COT		@REME01	
	SAPFAX		014505124	0	0 s. Le fax a été stoppé manuellement
04/24/01 2:20:47 PM	014194610	CAR		@REME01	
	SAPFAX		01-8480259	0	0 s. Le fax a été stoppé manuellement
04/24/01 2:20:46 PM	014194610	ISION		@REME01	
	SAPFAX		014600417	0	0 s. Le fax a été stoppé manuellement
04/24/01 2:20:45 PM	014194610	COA		@REME01	
	SAPFAX		016262573	0	0 s. Le fax a été stoppé manuellement
04/24/01 2:20:45 PM	014194610	MCD		@REME01	
	SAPFAX		01-6603653	0	0 s. Le fax a été stoppé manuellement
04/24/01 2:20:45 PM	014194610	3698		@REME01	
	SAPFAX		014505124	0	0 s. Le fax a été stoppé manuellement

Browse the outgoing message database by scrolling down.

To view a message, click on its row or in one of its fields and click on **View**.

The **Back** button sends you back to the previous screen (in that case, back to the main menu).

The **Research** button brings you to the query screens (See [Queries](#)).

The fields of this screen are:

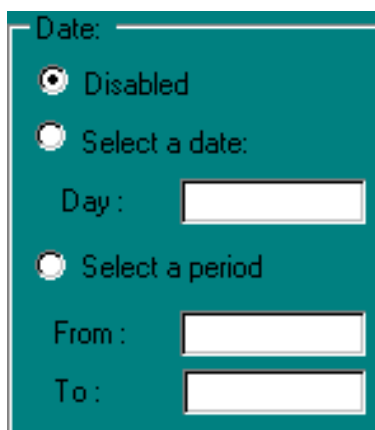
- Date & Time : when the message has been sent
- Sender : message sender's name
- Origin : AVM product used to send that message
- Recipient : recipient's name
- Recipient company : company name of the recipient
- Subject : message subject
- Fax number : fax number dialed
- Page : number of pages transferred
- Time : how long it takes to send that message
- Cover page : cover page used to send that message
- Advanced status : outgoing message detailed status

QUERIES

The query screens allow you to browse easily through your archive database thanks to criteria you can activate or not.

Query by date (incoming / outgoing)

Beware the date format must be MM-dd-yy

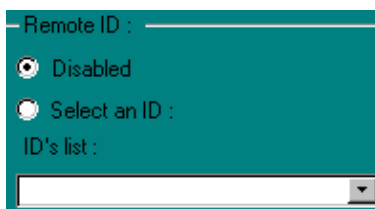


It may be necessary to adjust your regional settings to have the correct date format in there as well (short date format = MM-dd-yy).

(Start → Settings → Control panel → Regional settings)

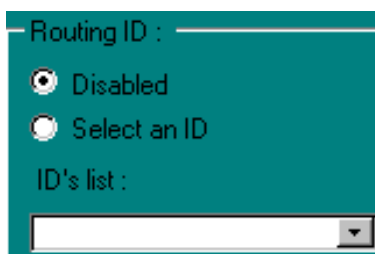
Query by CSID (incoming)

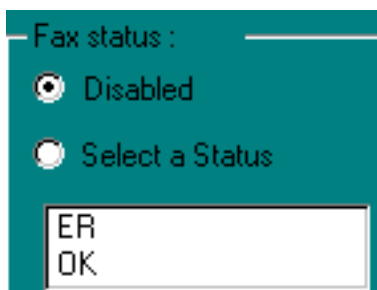
You can only do this query if the distant sender has given a CSID to its fax machine. In that case the CSID has been retrieved by [GlobalComServer](#).



Query by routing index (incoming)

Those routing index correspond to the incoming routing index you have created in [GlobalComServer](#).



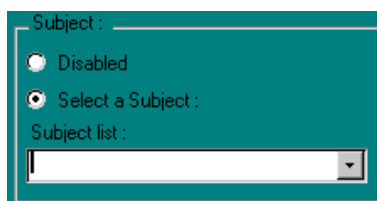
Query by status (incoming / outgoing)

Fax status :

Disabled

Select a Status

ER
OK

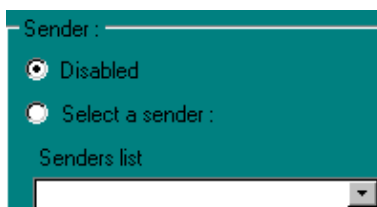
Query by subject (incoming / outgoing)

Subject :

Disabled

Select a Subject :

Subject list :

Query by sender (outgoing)

Sender :

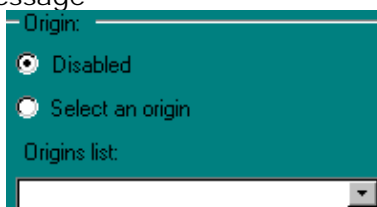
Disabled

Select a sender :

Senders list :

Query by origin (outgoing)

AVM product used to send this message

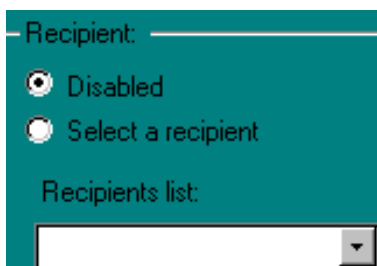


Origin:

Disabled

Select an origin

Origins list:

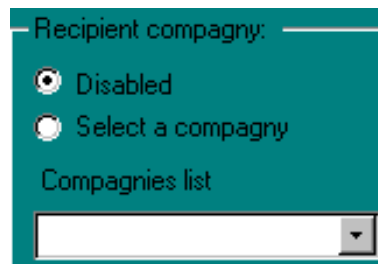
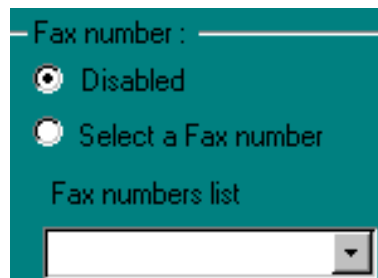
Query by recipient (outgoing)

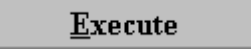
Recipient:

Disabled

Select a recipient

Recipients list:

Query by recipient company (outgoing)**Query by fax number (outgoing)**

Once your criteria fixed, click on the  button to launch the query.

PRINTING QUERY RESULTS


Print the reports by clicking on the “**print**” button.

(See [Page setup in order to print](#))

TROUBLESHOOTING

Using the module on a PC with Access2000 installed

Problem:

When you click on , Access2000 starts and asks you if you want to convert / open the database.

Do not accept either one. Access2000 cannot open the module.

Solution:

The module must be installed using the custom setup with all options.

After installation, show the properties of the  shortcut and click on the shortcut tab.

The shortcut should look like the following:

"D:\GlobalComServer\Archive\Fax Serveur 32.mde"

You must correct it as follows:

"D:\GlobalComServer\Archive\Office\MSACCESS.EXE"

"D:\GlobalComServer\Archive\Fax Serveur 32.mde"

This will force the use of the correct msaccess.exe (installed thanks to the custom setup).

