



GLOBALCOMSERVER HP 9100C DIGITAL SENDER GATEWAY ADMINISTRATOR'S GUIDE

© 1998 AVM INFORMATIQUE
(UPDATED: AUGUST 22, 2006)

LICENSE

Information in this document is subject to change without notice.

This document cannot be reproduced in any ways without AVM Informatique written authorization.

GCS HP9100C Digital Sender gateway is an AVM Informatique product.

GCS HP9100C Digital Sender gateway is protected by copyrights.

© 1999 - 2000 AVM Informatique.

All rights reserved.

All products mentioned in this manual are trademarks of their respective owners.

TABLE OF CONTENTS

GCS HP 9100C Digital Sender gateway Administrator's guide

Check our web site for updates
<http://www.avm-informatique.com>

LICENSE	2
TABLE OF CONTENTS	3
PRESENTATION	4
PRE-REQUIREMENTS	5
INSTALLATION	6
GCS HP9100C Digital Sender gateway	6
How to parameter ScanFs32.....	6
Installing the HP 9100C Digital Sender software on the GCS platform	7
Configuration with HP JetAdmin	10
HOW WORKS SCANFS32.EXE	12
Declaring users	12
Follow up	12
TROUBLESHOOTING	13
User license problem	13

PRESENTATION

GCS HP9100C Digital Sender gateway allows you to send automatically faxes coming from a HP 9100C Digital Sender (fax function).

PRE-REQUIREMENTS

Your network has at least:

- One HP 9100C Digital Sender
- One **GlobalComServer platform** (AVM Informatique product)

INSTALLATION

GCS HP9100C Digital Sender gateway

ScanFs32.exe is an AVM Informatique program.

Create a folder named **HpfScan** in **..\Trafic**.
Copy **Scanfs32.exe** in the folder **..\Trafic\System32**.
Go to **..\Trafic\System32** and launch **Scanfs32.exe**.

You can also start **Scanfs32.exe** from an MS-DOS window (from the folder **..\Trafic\System32**) by typing the following command:

ScanFs32 -install

How to parameter ScanFs32

To view and adapt the new service configuration, go to **control panel → Services**.
You can modify its startup type (manual by default) and its account (system account by default).

To uninstall that service, stop it and from an MS-DOS window (**..\Trafic\System32**) type:

ScanFs32 -remove

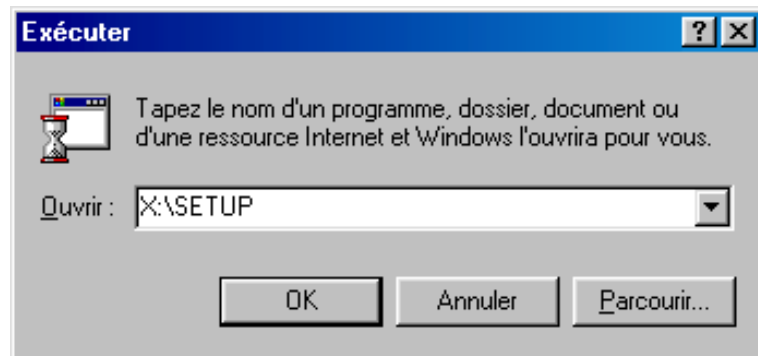
Installing the HP 9100C Digital Sender software on the GCS platform

Insert the Digital Sender CD-rom in your CD-ROM player.

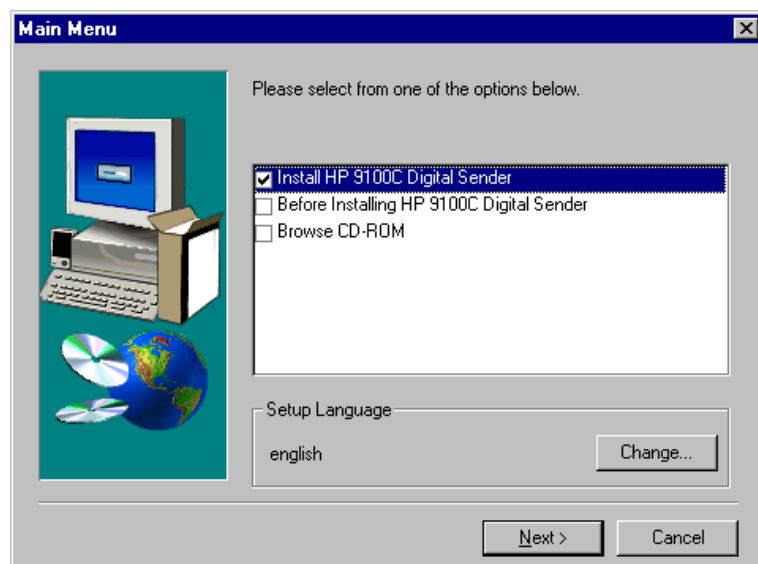
If **Automatic insertion notification** CD-ROM property is active, setup will start automatically. Otherwise, open the **Run** window (**Taskbar → Start → Run**) and write the following command:

X:\SETUP

Replace **X** with the letter of your CD player.

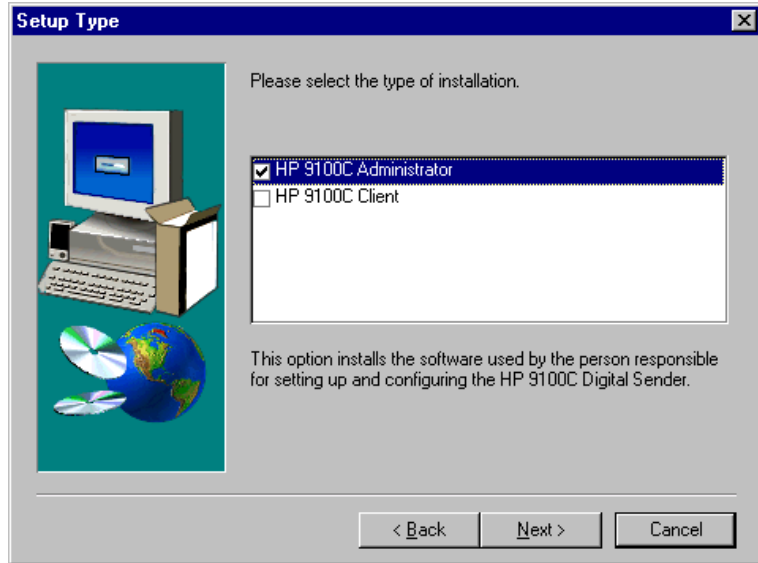


Push **Enter** or click **OK**.

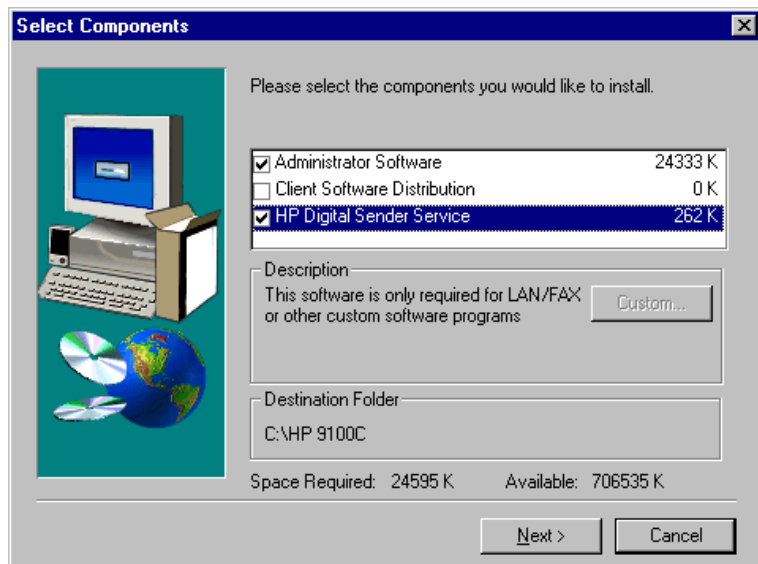


Click **Next**.

Choose **HP 9100C Administrator**.



You have to select **HP Digital Sender Service** and **Administrator software**.
Change the installation folder if you wish.



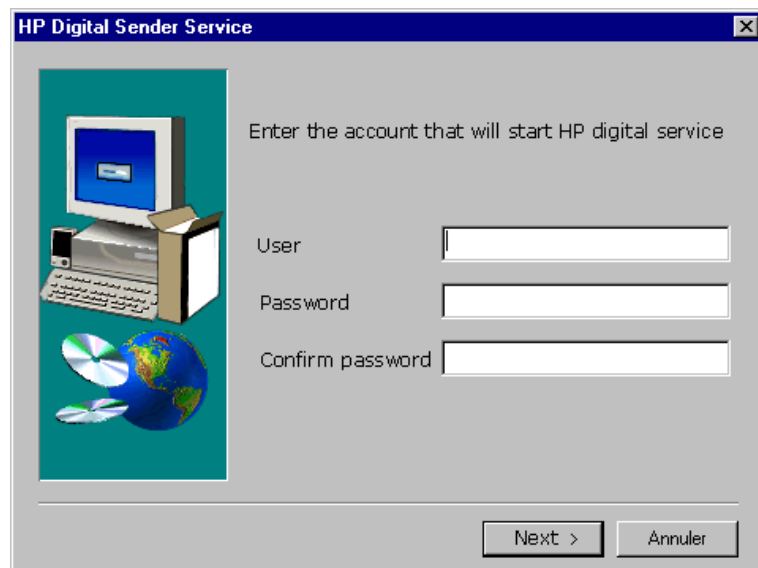
Click **Next**.

Before installing the Digital Sender NT service, the program sums up the pre-requirements allowing the service to run properly.



Click **Yes** to install the service.

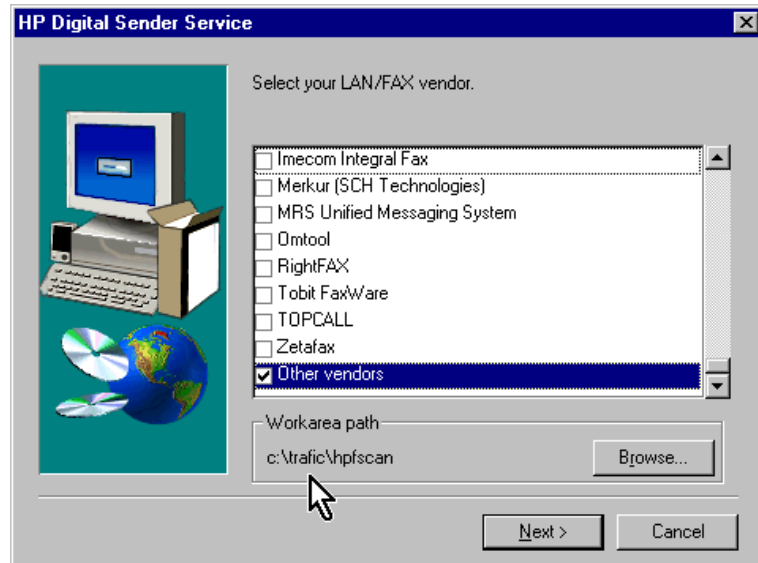
Use the account starting the **AVM – GlobalComServer** service.



Click **Next**.

Accept to add the fax service.

Check **Other vendors** at the end of the list.




Click **Browse** to select the folder `..\Traffic\hpfscan`.

Click **Next**, the installation is over.

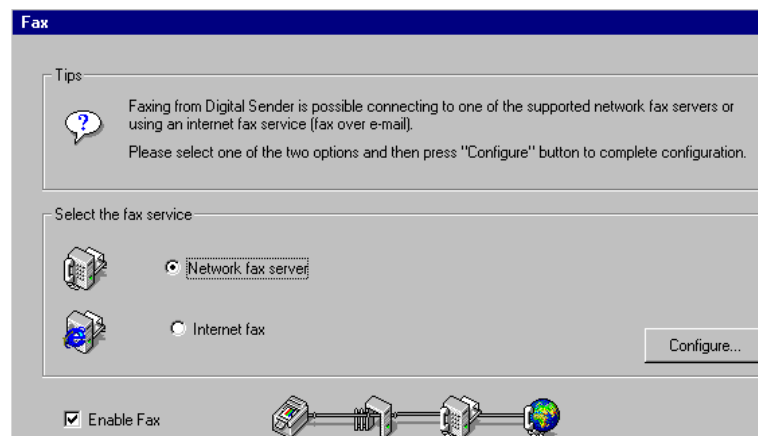
You need to reboot your machine.

Configuration with HP JetAdmin

Start  HP JetAdmin from **Start** → **programs** → **HP jetadmin utilities**.

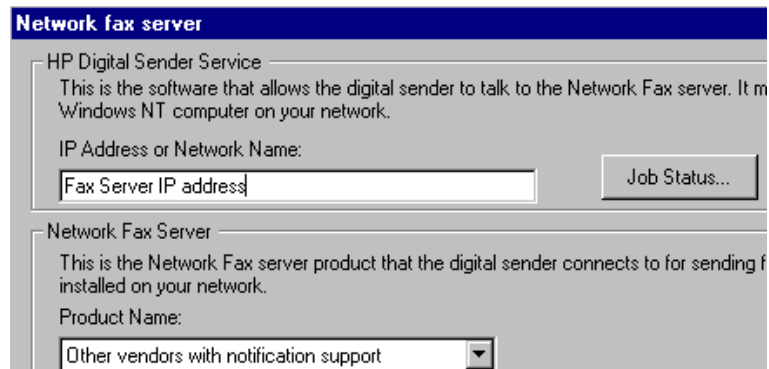
Click on **Device** → **Modify** (if you have several HP9100C, choose the correct one first).

Click 6 times **OK** and **Next** to reach the following screen



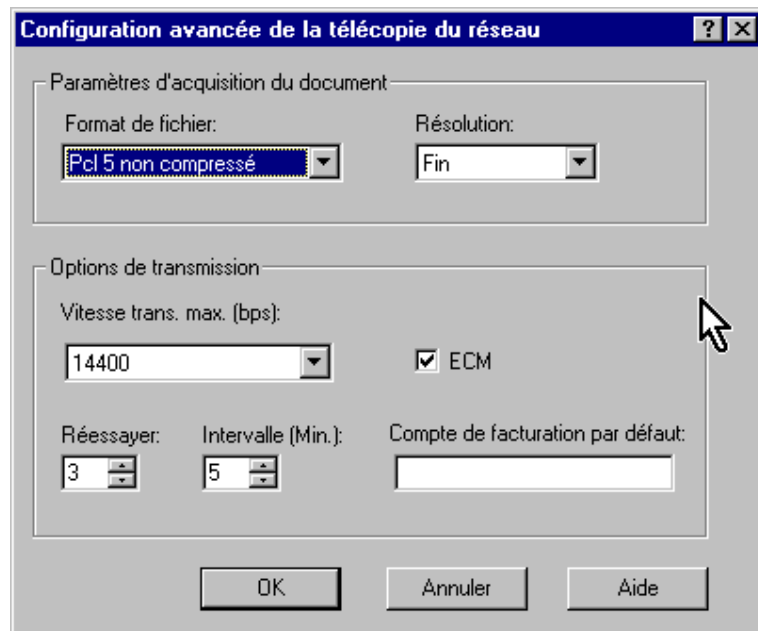
Click **Configure**

Type the GCS platform IP address



On the same screen (at the bottom of the window) click **Advanced...**

Select **PCL5 uncompressed** as file format



Click **OK** twice.

Pass the following screen to finish the modification.

HOW WORKS SCANFS32.EXE

The program examine periodically the folder `..\Traffic\Hpfscan` looking for .hpf files.

Those files are created when a fax is sent from the Digital Sender.

They contain the following parameters:

- ##dial fax number
- ##billback recipient's name
- ##UserName sender's name
- ##Filename associated file

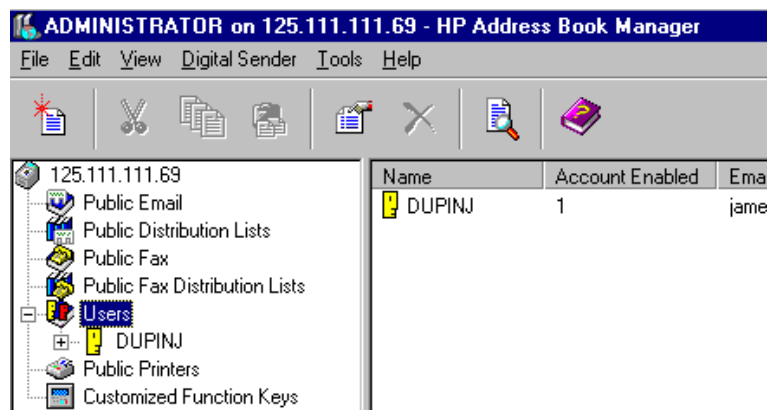
The files are deleted afterwards.

For every .hpf file, an H file is created in the folder `..\Traffic\Dep` to be processed by **GlobalComServer**.

The associated file is also created in `..\Traffic\Dep` and its name begins with P except if the original data file is a .tif file (in that case the first letter is T).

Declaring users

In order to use AVM logbook the **HP address book manager** account names must be identical to the full name declared in the **GlobalComServer** administration.



In the **GlobalComServer** administration:



Follow up

GCSWin logbook allows the user to keep an eye on their GCS messages.

TROUBLESHOOTING

User license problem

This happens when your **AVM GlobalComServer** license has a limited number of users. The **GCS platform** rejects one or more GCS messages (license problem – user unknown).

Also, if **Scanfs32** does not find a **GlobalComServer** account corresponding to the account used from the HP9100C then the program assigns a default username to the fax.

That name is `[]HpScanFs32[]!` `[]` shows a blank

Create a user account in the fax server.

Once it is created rename the full name of this user
`[]HpScanFs32[]!` // blank HpScanFs32 blank !

Blanks and capitals are important.